

BRC_No 00465

Strain name 遺伝性多発性外骨腫EXT2トランスジェニックマウス(E22)

| Primer | | |
|---------------------|---------------------------|--------|
| primer_name | primer_seq | length |
| 1 mEXT2 (EXT2-Tg) | GGTGACGTAGTAGATTCCGGT | 20 |
| 2 Col1a1 alpha2 | GTACCATTCCAGGGCTAGCGA | 21 |
| 3 lacZ | CATTCAGGCTGCGCAACTGTT | 21 |
| 4 | CTAGGCCACAGAATTGAAAGATCT | 24 |
| 5 | GTAGGTGGAAATTCTAGCATCATCC | 25 |
| | | |
| | | |
| | | |
| | | |

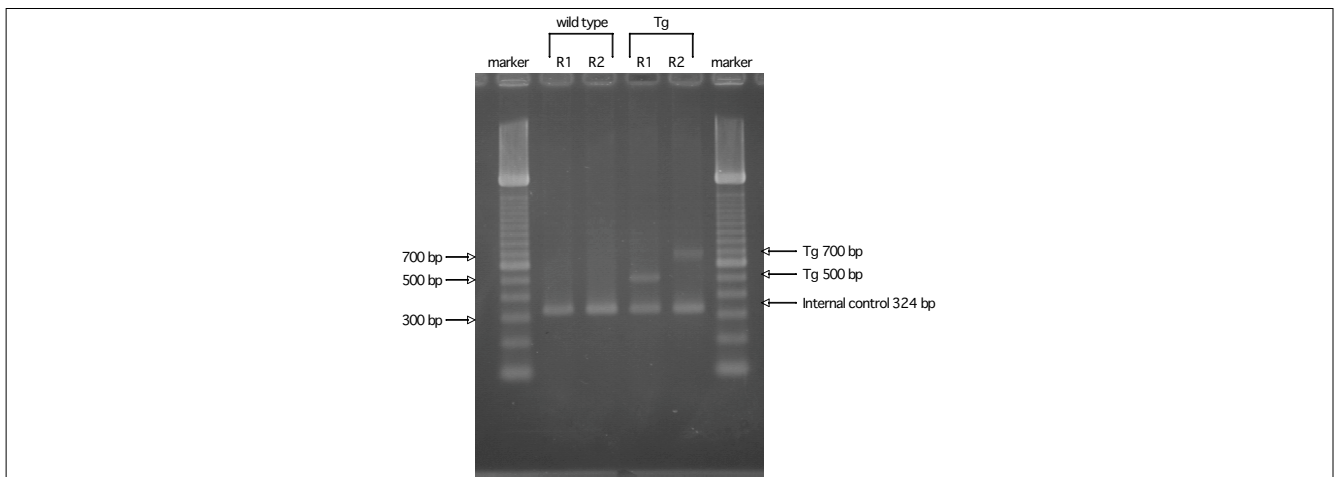
Reaction Components

Enzyme Roche Taq (Cat. No. BM1418432)

Reaction Conditions

| Conc | Run 1 | Run 2 | Run 3 |
|--------------|-----------|-----------|-------|
| H2O | 15.3 | 15.3 | |
| PCR buffer | 2.5 | 2.5 | |
| dNTP | 2.0 | 2.0 | |
| primer 1 | 1.0 | 0 | |
| primer 2 | 1.0 | 1.5 | |
| primer 3 | 0 | 1.5 | |
| primer 4 | 1.0 | 0.5 | |
| primer 5 | 1.0 | 0.5 | |
| DNA | 1.0 | 1.0 | |
| Taq | 0.2 | 0.2 | |
| | | | |
| | | | |
| | | | |
| | | | |
| | | | |
| total | 25 | 25 | |

| step | temp (°C) | time (sec) | note |
|------|-----------|------------|-----------------------|
| 1 | 94 | 300 | |
| 2 | 94 | 30* | |
| 3 | 55 | 30* | |
| 4 | 72 | 60* | *Repeat for 35 cycles |
| 5 | 72 | 300 | |
| | | | |
| | | | |
| | | | |
| | | | |
| | | | |
| | | | |
| | | | |
| | | | |
| | | | |
| | | | |



Marker

100 bp ladder (Invitrogen, Cat. 15628-050)

Gel

2% agarose in 1 X TAE (100 V, 30 min)

Comment

PCR products

| primer_set | product_size | product |
|---------------------|--------------|-------------------------|
| primer 1 primer 2 | 500 bp | Tg |
| primer 2 primer 3 | 700 bp | Tg |
| primer 4 primer 5 | 324 bp | internal control (IL-2) |
| | | |