

RBRC 00961

Strain name B6;129P2-Gal3st1<tm1Kho>/KhoRbrc

Primer	primer_name	primer_seq	length	Reference
1	CSTWILD	CACACTGCTCAACATCCTGTTC	22	Glia, 45, 269-277 (2004).
2	CSTREVRS	TACTCCTGCAGTAGCACCAAGT	22	Glia, 45, 269-277 (2004).
3	neo_F	GCAGCGCATCGCCTTCTATCGC	22	RIKEN BRC

**Reaction Components**

Enzyme TOYOBO KOD FX (Code.No : KFX-101)

**Reaction Conditions**

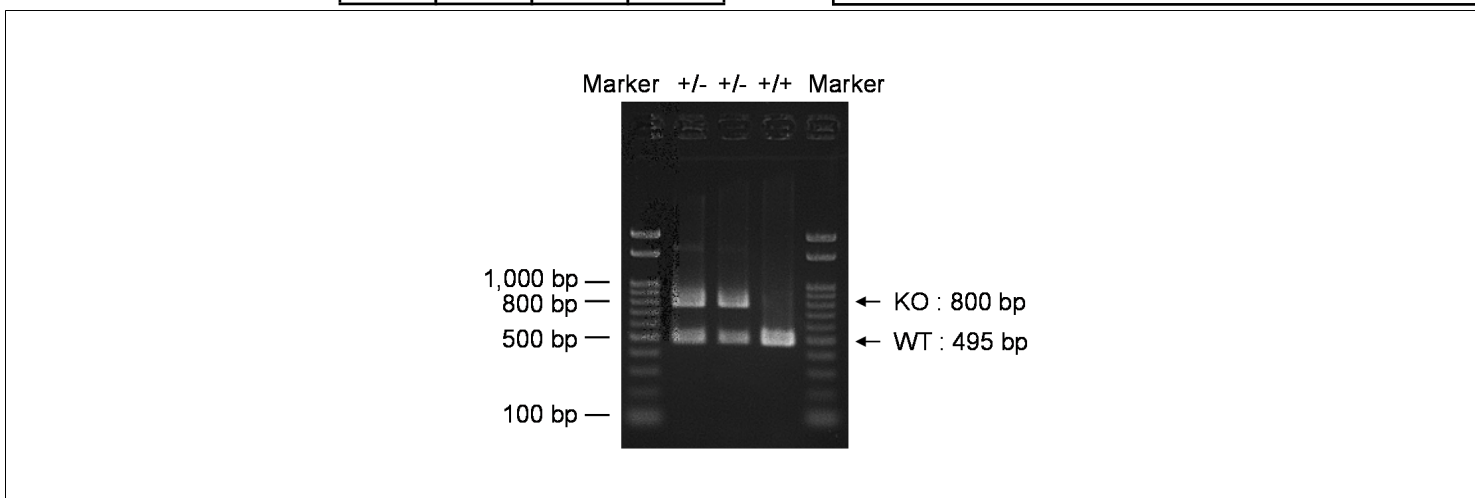
step	temp (°C)	time (sec)	note
1	94	120	
2	98	10*	
3	60	30*	
4	68	60*	*Repeat for 30 cycles

Reagent	Conc	Reaction 1	2	3	4
H2O		1.8			
PCR buffer	2 X	10.0			
dNTP	2.0 mM	4.0			
primer 1	10 pmol/μl	1.0			
primer 2	10 pmol/μl	1.0			
primer 3	10 pmol/μl	1.0			
DNA		1.0			
Taq	1 U/μl	0.2			
total		20			

(μL)

**Marker** Gene Ladder 100 (Wako, Cat. 316-06951)

**Gel** 2% agarose in 1 X TAE (100 V, 30 min)



primer_set	product_size	product (allele type)	
primer 1	primer 2	495 bp	WT
primer 2	primer 3	800 bp	KO

+/+ (wild-type): 495 bp  
+/- (heterozygous): 495 bp and 800 bp

**Comment** [Standard PCR](#)

Novagen KOD Xtreme™ Hot Start DNA Polymerase can be purchased from EMD.



# PCR protocol

Sheet ID PS\_00195  
Release date : 1/26/2006  
Print date : 3/16/2022

RBRC 00961

Strain name TgH(CSTneo) 01

Primer	primer_name	primer_seq	length		Reference
1	CSTWILD	CACACTGCTCAACATCCTGTTC	22		Glia, 45, 269-277 (2004).
2	CSTMUTNT	CTCATTCTCCCACTCATGATC	22		Glia, 45, 269-277 (2004).
3	CSTREVRS	TACTCCTGCAGTAGCACCAAGT	22		Glia, 45, 269-277 (2004).

### Reaction Components

Enzyme

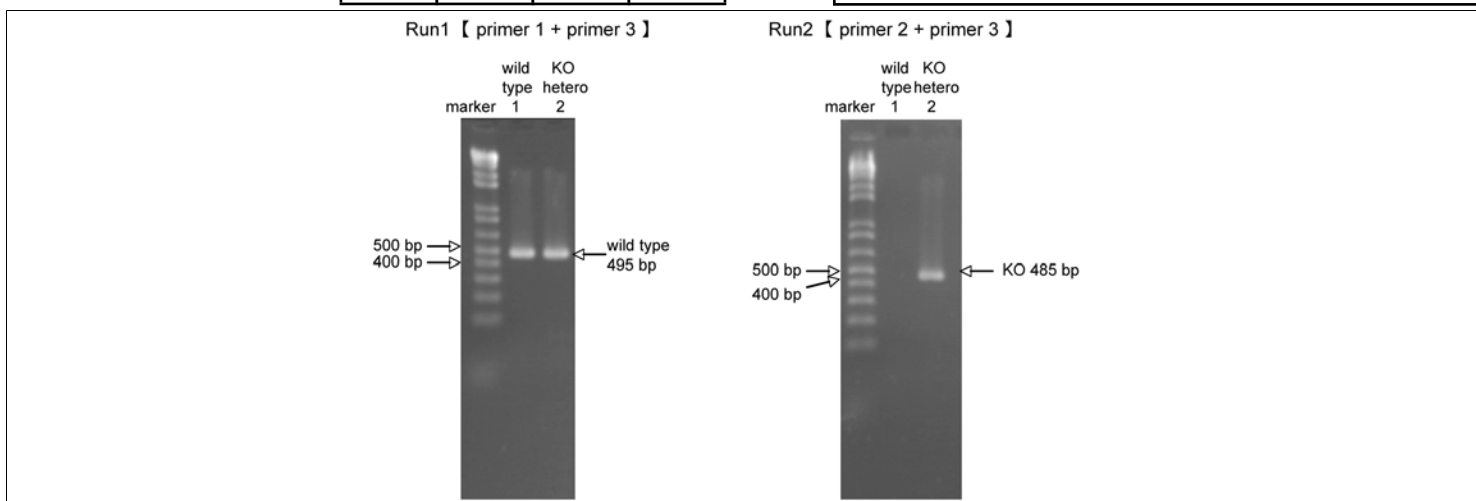
### Reaction Conditions

step	temp (°C)	time (sec)	note
1	94	300	
2	94	30*	
3	62	30*	
4	72	60*	*Repeat for 35 cycles
5	72	300	

Reagent	Conc	Reaction 1	2	3	4
H2O		17.3	17.3		
PCR buffer	10 X	2.5	2.5		
dNTP	2.5 mM	2.0	2.0		
primer 1	10 pmol/μl	1.0	0		
primer 2	10 pmol/μl	0	1.0		
primer 3	10 pmol/μl	1.0	1.0		
DNA		1.0	1.0		
Taq		0.2	0.2		
<b>total</b>		25	25		

Marker

Gel



primer_set	product_size	product (allele type)
primer 1 + primer 3	495 bp	WT
primer 2 + primer 3	485 bp	KO

Comment