

RBRC 01307

Strain name C.Cg-Hbegf<tm1.1Mek>/MekRbrc

Primer	primer_name	primer_seq	length	Reference
1	promoter	CAGCGGACAGTGCCTTAGTGG	21	RIKEN BRC
2	exon 1	GAGGAGGCCGCAATAAGACCC	21	RIKEN BRC
3	lacZ-R	TCTGCTTCAATCAGCGTGCC	20	Genes Cells, 1:59-72 (1996).

Reaction Components

Enzyme

Reaction Conditions

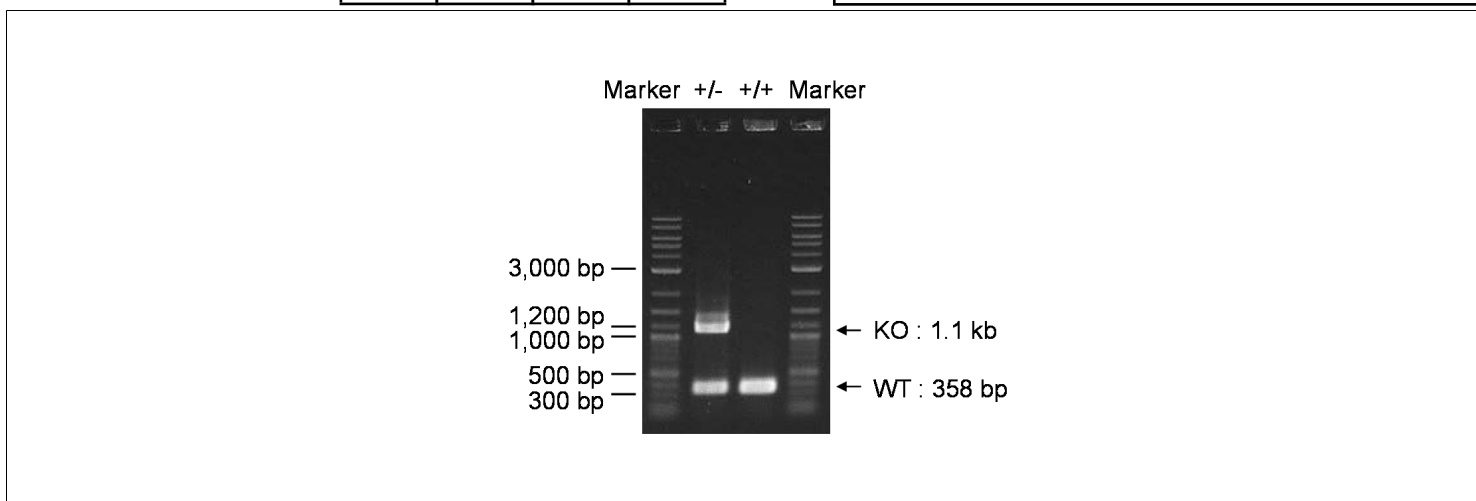
step	temp (°C)	time (sec)	note
1	94	120	
2	98	10*	
3	68	180*	*Repeat for 30 cycles

Reagent	Conc	Reaction 1	2	3	4
H2O		1.6			
PCR buffer	2 X	10.0			
dNTP	2.0 mM	4.0			
primer 1	10 pmol/µl	1.0			
primer 2	10 pmol/µl	1.0			
primer 3	10 pmol/µl	1.0			
DNA		1.0			
Taq	1 U/µl	0.4			
total		20			

(µL)

Marker 2-Log DNA Ladder (NEB, Cat. N3200)

Gel 1% agarose in 1 X TAE (100 V, 30 min)



primer_set	product_size	product (allele type)	
primer 1	primer 2	358 bp	WT
primer 1	primer 3	ca 1.1 kb	KO

+/+ (wild-type): 358 bp
+/- (heterozygous): 358 bp and 1.1 kb

Comment

Novagen KOD Xtreme™ Hot Start DNA Polymerase can be purchased from EMD.

RBRC 01307

Strain name HB-EGF Knockout mice(BALB) (HBdel#80/BALB)

Primer	primer_name	primer_seq	length	Reference
1	Neo-geo-F1	ATGGGATCGGCCATTGAACA	20	Depositor' s primer
2	Neo-geo-R1	GAAGAACTCGTCAAGAAGGC	20	Depositor' s primer
3	HBint1	AGGGCAAGATCATGTGTCCTGCCTCAAGCC	30	Depositor' s primer
4	5-5S2	CATGATGCTCCAGTGAGTAGGCTCTGATTAC	31	Depositor' s primer

Reaction Components

Enzyme TaKaRa Ex Taq (Cat. No. RR001A)

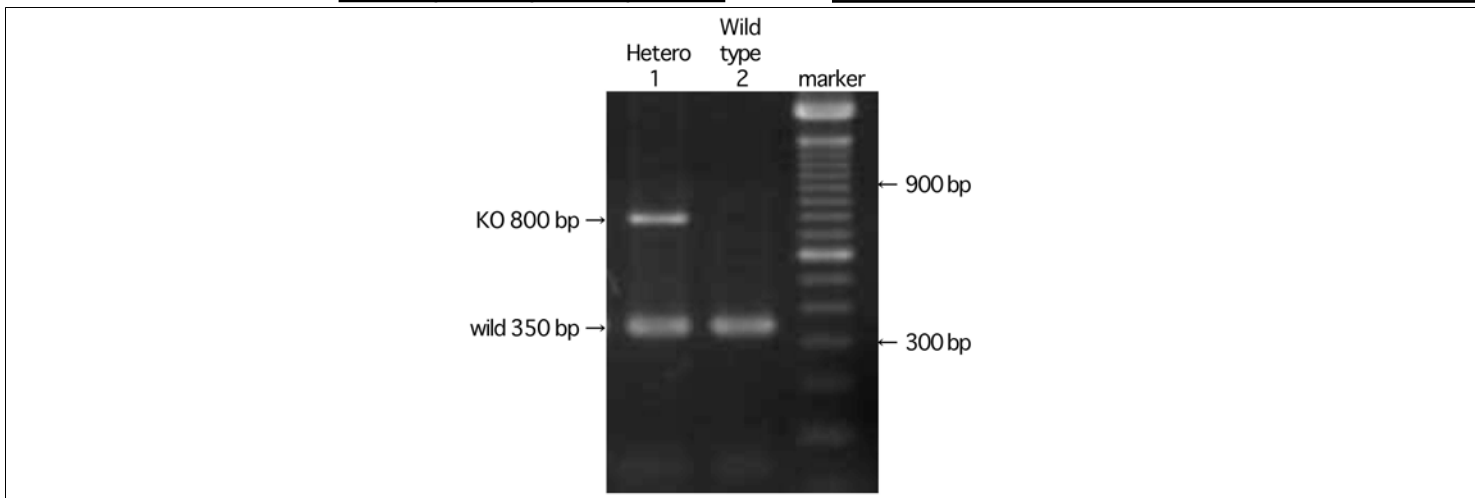
Reaction Conditions

step	temp (°C)	time (sec)	note
1	94	180	
2	94	30*	
3	57	30*	
4	72	60*	*Repeat for 30 cycles
5	72	300	

Reagent	Conc	Reaction 1	2	3	4
H ₂ O		15.3			
PCR buffer	10 X	2.5			
dNTP	2.5 mM	2.0			
primer 1	10 pmol/ µl	1.0			
primer 2	10 pmol/ µl	1.0			
primer 3	10 pmol/ µl	1.0			
primer 4	10 pmol/ µl	1.0			
DNA		1.0			
Taq		0.2			
total		25			

Marker 100 bp ladder (Invitrogen, Cat. 15628-050)

Gel 2% agarose in 1 X TAE (100 V, 30 min)



primer_set	product_size	product (allele type)
primer 1	800 bp	KO
primer 3	350 bp	WT

Comment [Standard PCR](#)