

BRC\_No 01343 Strain name Emx1-Cre Tg2

### Primer

	primer_name	primer_seq	length
1	CW-Cre2	ACCTGATGGACATGTTTCAGGGATCG	25
2	CW-Cre2	TCCGGTTATTCAACTTGCACCATGC	25
3	IL2-42	CTAGGCCACAGAATTGAAAGATCT	24
4	IL2-43	GTAGGTGGAAATTCTAGCATCATCC	25

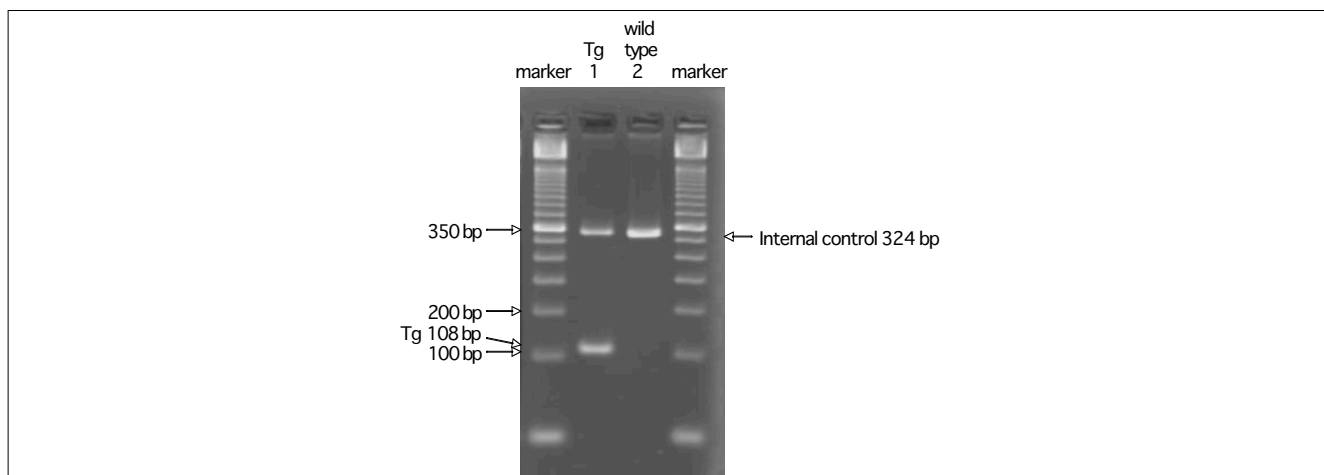
### Reaction Components

Enzyme Roche Taq (Cat. No. BM1418432)

### Reaction Conditions

step	temp (°C)	time (sec)	note
1	94	180	
2	94	30*	
3	60	30*	
4	72	60*	*Repeat for 35 cycles
5	72	300	

	Conc	Run 1	Run 2	Run 3
H2O		15.3		
PCR buffer	10 X	2.5		
dNTP	2.5 mM	2.0		
primer 1	10 pmol/ $\mu$ l	1.0		
primer 2	10 pmol/ $\mu$ l	1.0		
primer 3	10 pmol/ $\mu$ l	1.0		
primer 4	10 pmol/ $\mu$ l	1.0		
DNA		1.0		
Taq		0.2		
total		25	0	



### Marker

50 bp ladder (Invitrogen, Cat. 10416-014)

### Gel

4% Nusieve in 0.5 X TBE (100 V, 45 min)

### PCR products

primer_set	product_size	product
primer 1 primer 2	108 bp	Tg
primer 3 primer 4	324 bp	internal control (IL-2)

### Comment