

RIKEN BRC

BRC_No 01362 Strain name CAG-CAT-Mesp1

Primer

	primer_name	primer_seq	length	
1	CAT2	CAGTCAGTTGCTCAATGTACC	21	
2	CAT3	ACTGGTGAAACTCACCCA	18	
3	oIMR0042	CTAGGCCACAGAATTGAAAGATCT	24	Internal control (IL-2)
4	oIMR0043	GTAGGTGGAAATTCTAGCATCATCC	25	Internal control (IL-2)

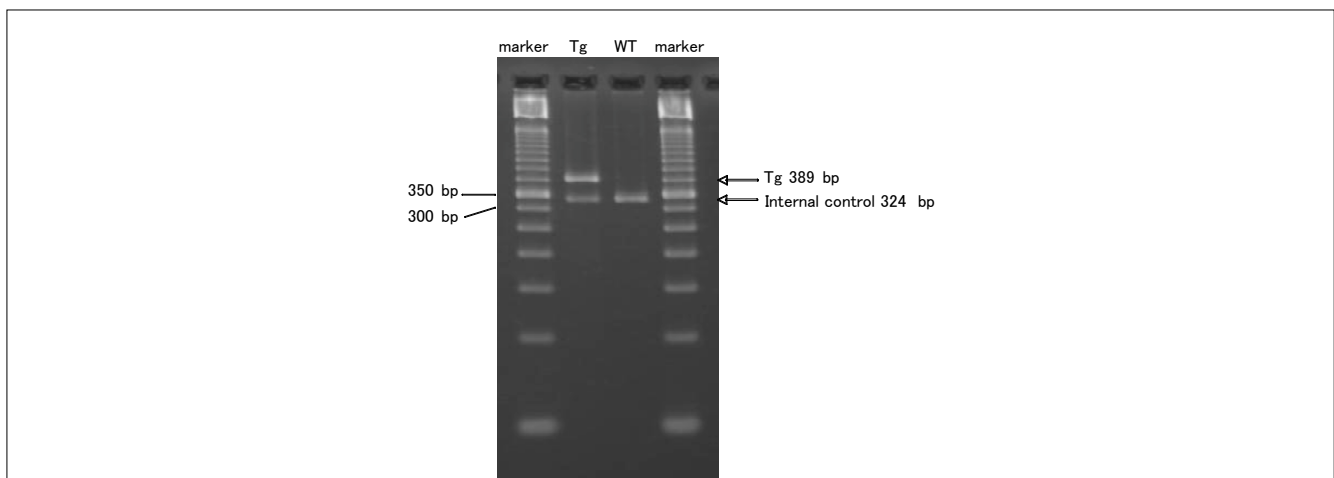
Reaction Components

Enzyme Roche Taq (Cat. No. BM1418432)

	Conc	Run 1	Run 2	Run 3
H2O		15.3		
PCR buffer	10 X	2.5		
dNTP	2.5 mM	2.0		
primer 1	10 pmol/μl	1.0		
primer 2	10 pmol/μl	1.0		
primer 3	10 pmol/μl	1.0		
primer 4	10 pmol/μl	1.0		
DNA		1.0		
Taq		0.2		
total		25		

Reaction Conditions

step	temp (°C)	time (sec)	note
1	94	300	
2	94	30*	
3	55	30*	
4	72	60*	*Repeat for 35 cycles
5	72	300	



Marker

50 bp ladder (Invitrogen, Cat. 10416-014)

Gel

4% Nusieve in 0.5 X TBE (100 V, 50 min)

PCR products

primer_set	product_size	product
primer 1 primer 2	389 bp	Tg
primer 3 primer 4	324 bp	internal control (IL-2)

Comment