

BRC\_No 01460

Strain name POCre-B

Primer			
	primer_name	primer_seq	length
1	Cre1	AATGCTTCTGTCCGTTTGCC	20
2	Cre2	CTACACCAGAGACGGAAATC	20
3	IL2-42	CTAGGCCACAGAATTGAAAGATCT	24
4	IL2-43	GTAGGTGGAAATTCTAGCATCATCC	25

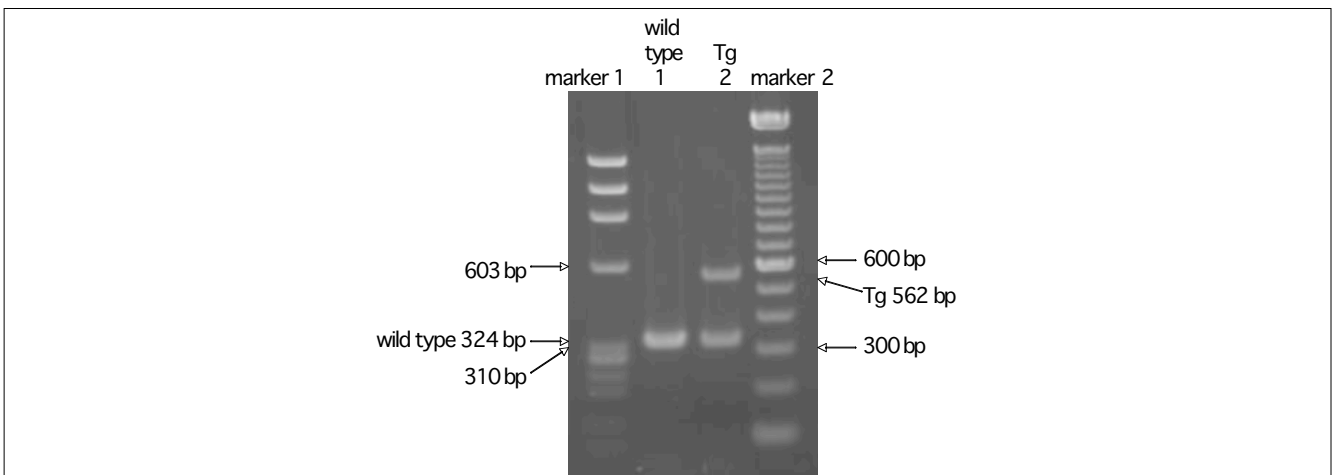
### Reaction Components

Enzyme Roche Taq (Cat. No. BM1418432)

### Reaction Conditions

	Conc	Run 1	Run 2	Run 3
H2O		15.3		
PCR buffer	10 X	2.5		
dNTP	2.5 mM	2.0		
primer 1	10 pmol/ $\mu$ l	1.0		
primer 2	10 pmol/ $\mu$ l	1.0		
primer 3	10 pmol/ $\mu$ l	1.0		
primer 4	10 pmol/ $\mu$ l	1.0		
DNA		1.0		
Taq		0.2		
total		25		

step	temp (°C)	time (sec)	note
1	94	180	
2	94	30*	
3	60	30*	
4	72	60*	*Repeat for 35 cycles
5	72	300	



### Marker

marker 1:  $\phi$ X174 Hae III, marker2: 100 bp ladder (Invitrogen, Cat. 15628-050)

### Gel

2% agarose in 1 X TAE (100 V, 30 min)

### PCR products

primer_set	product_size	product
primer 1 primer 2	562 bp	Tg
primer 3 primer 4	324 bp	internal control (IL-2)

Comment