

**BRC\_No** 01550      **Strain name** OR153

**Primer**

	primer_name	primer_seq	length
1	Syt5-OR153-R2	GGCGGGTAGGAAATCAGAGAGGAAGTGGAG	30
2	Syt5-OR153-F2	TGAGTGGACCCCTGGGAGGAAGGCTGAGAC	30
3	T/JB1	TTTACTCGGATTAATGTCAGGAATTG	27

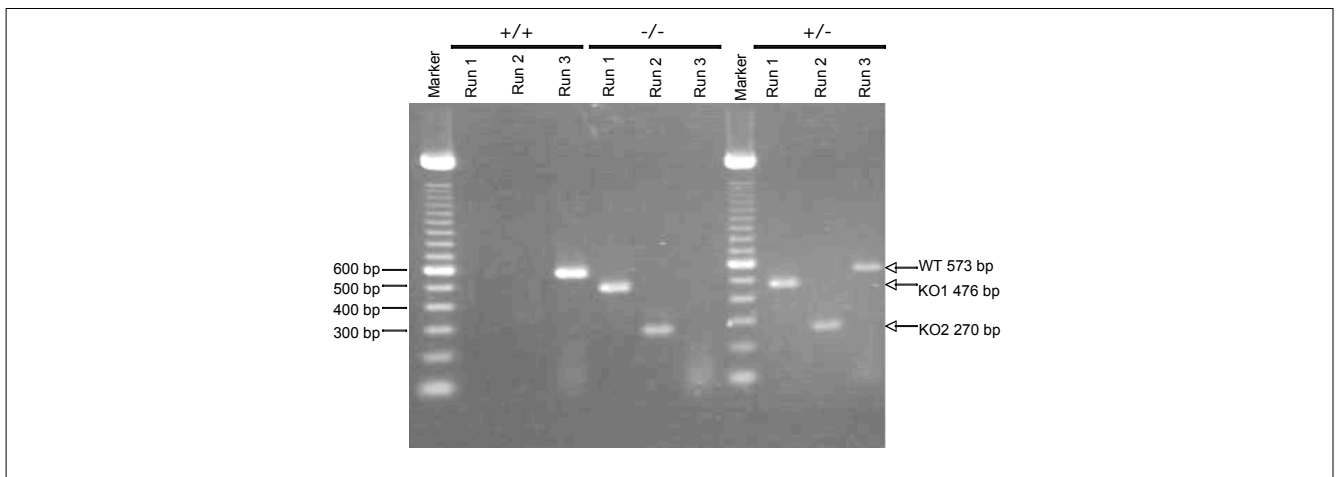
**Reaction Components**

<b>Enzyme</b>	Roche Taq (Cat. No. BM1418432)
---------------	--------------------------------

**Reaction Conditions**

step	temp (°C)	time (sec)	note
1	94	180	
2	94	30*	
3	55	30*	
4	72	60*	*Repeat for 35 cycles
5	72	300	

Conc	Run 1	Run 2	Run 3
H2O	17.3	17.3	17.3
PCR buffer	2.5	2.5	2.5
dNTP	2.0	2.0	2.0
primer 1	0	1.0	1.0
primer 2	1.0	0	1.0
primer 3	1.0	1.0	0
DNA	1.0	1.0	1.0
Taq	0.2	0.2	0.2
<b>total</b>	<b>25</b>	<b>25</b>	<b>25</b>



**Marker**

100 bp ladder (Invitrogen, Cat. 15628-050)

**Gel**

2% agarose in 1 X TAE (100 V, 40 min)

**PCR products**

primer_set	product_size	product
primer 2 primer 3	476 bp	KO1
primer 1 primer 3	270 bp	KO2
primer 1 primer 2	573 bp	wild

**Comment**