

BRC\_No 01556

Strain name OR238

**Primer**

	primer_name	primer_seq	length
1	NelI2-OR238-R1	AATGTGGTTGTTCTACAAGAGCAGAAAAGG	30
2	NelI2-OR238-F1	TCCCAGATGTCACATAGGAGCAGGAAGTAC	30
3	T/BAL	CTTGTGTCATGCACAAAGTAGATGTCC	27

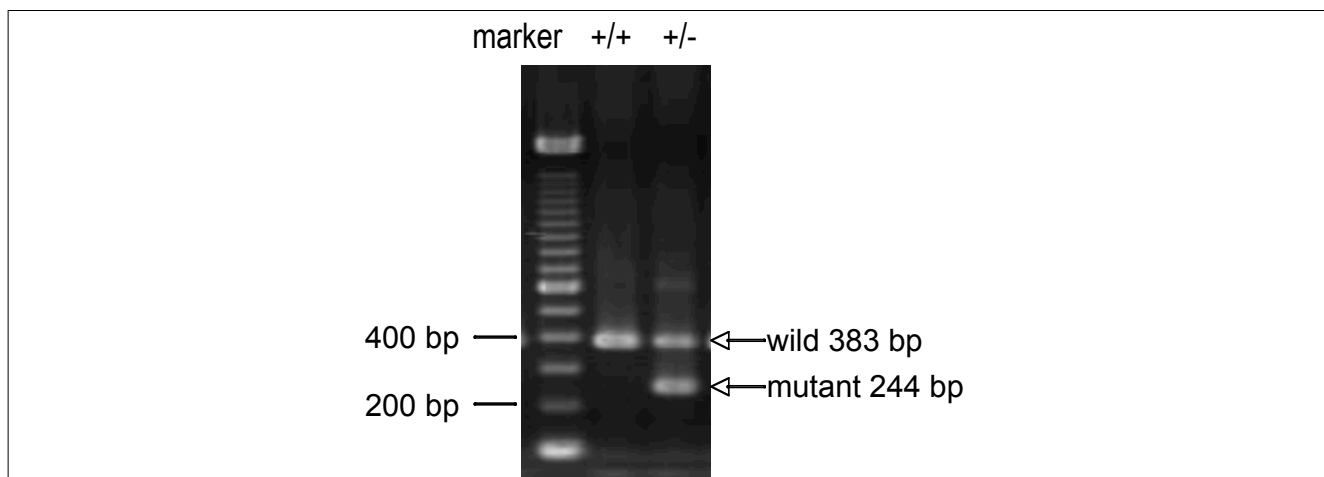
**Reaction Components**

Enzyme Roche Taq (Cat. No. BM1418432)

**Reaction Conditions**

	Conc	Run 1	Run 2	Run 3
H2O		16.3		
PCR buffer	10 X	2.5		
dNTP	2.5 mM	2.0		
primer 1	10 pmol/ $\mu$ l	1.0		
primer 2	10 pmol/ $\mu$ l	1.0		
primer 3	10 pmol/ $\mu$ l	1.0		
DNA		1.0		
Taq		0.2		
total		25		

step	temp (°C)	time (sec)	note
1	94	180	
2	94	30*	
3	55	30*	
4	72	60*	*Repeat for 35 cycles
5	72	300	



**Marker**

100 bp ladder (Invitrogen, Cat. 15628-050)

**Gel**

2% agarose in 1 X TAE (100 V, 30 min)

**PCR products**

primer_set	product_size	product
primer 1 primer 2	383 bp	wild
primer 1 primer 3	244 bp	mutant

**Comment**