

BRC_No 01593

Strain name bcl-2 knockout mouse

Primer			
	primer_name	primer_seq	length
1	MBCL5	ATGGCGCAAGCCGGGAGAAC	20
2	MBCL3	AGGAGAACGTCCTGGCAGCCATCTC	25
3	Neo5L-2	CGCCACAGTCGATGAATCC	20
4	Neo3L-2	TGGATTGCACGCAGGTTCTC	20

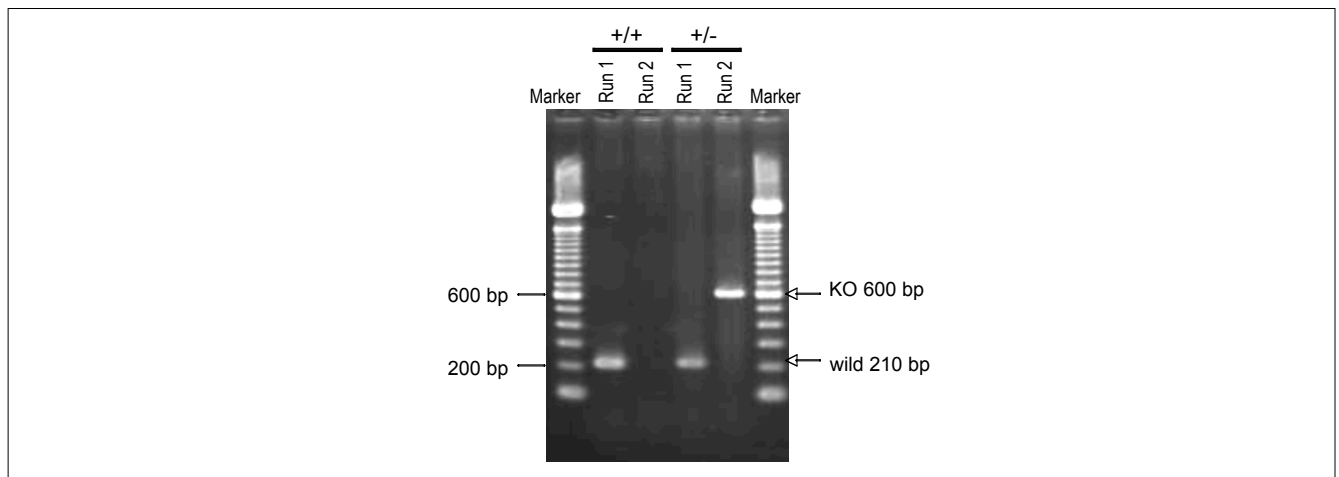
Reaction Components

Enzyme Roche Taq (Cat. No. BM1418432)

Reaction Conditions

	Conc	Run 1	Run 2	Run 3
H2O		17.3	17.3	
PCR buffer	10 X	2.5	2.5	
dNTP	2.5 mM	2.0	2.0	
primer 1	10 pmol/ μ l	1.0	0	
primer 2	10 pmol/ μ l	1.0	0	
primer 3	10 pmol/ μ l	0	1.0	
primer 4	10 pmol/ μ l	0	1.0	
DNA		1.0	1.0	
Taq		0.2	0.2	
total		25	25	

step	temp (°C)	time (sec)	note
1	94	180	
2	94	30*	
3	60	30*	
4	72	60*	*Repeat for 35 cycles
5	72	300	



Marker

100 bp ladder (Invitrogen, Cat. 15628-050)

Gel

2% agarose in 1 X TAE (100 V, 30 min)

PCR products

primer_set	product_size	product
primer 1 primer 2	210 bp	wild
primer 3 primer 4	600 bp	KO

Comment