

PCR protocol

RBRC 01653

Strain name CX-SB

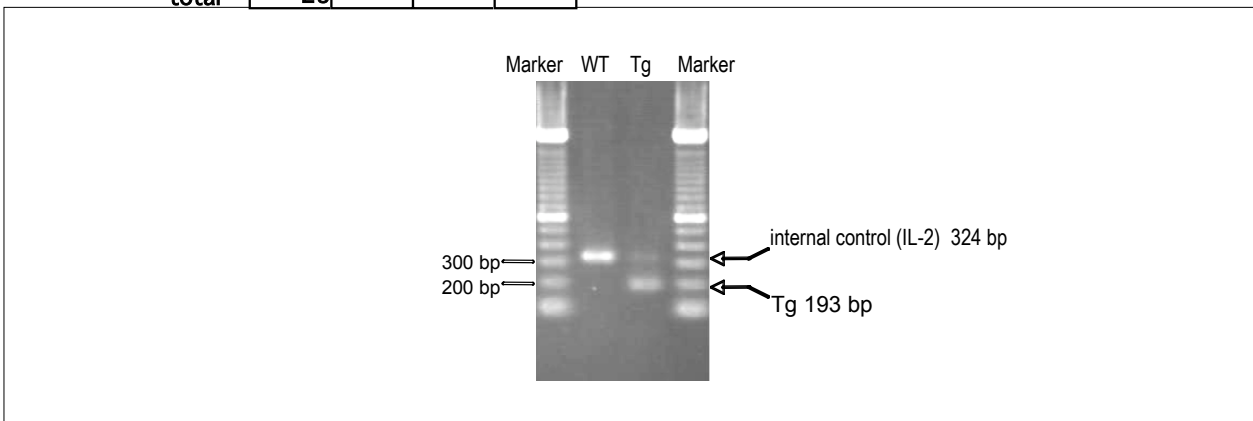
Primer	primer_name	primer_seq	length	
1	SB-seq5	AATAGAACTGTTTGGCCATAATGACCATCG	30	
2	SB-1L	ATCCACATAAATTTTCCTTCCTCATG	25	
3	oIMR0042	CTAGGCCACAGAATTGAAAGATCT	24	Internal control (IL-2)
4	oIMR0043	GTAGGTGGAAATTCTAGCATCATCC	25	Internal control (IL-2)

Reaction Components

 Enzyme Roche Taq (Cat. No. BM1418432)
Reaction Conditions

	Conc	Run 1	Run 2	Run 3	Run 4
H2O		14.3			
PCR buffer	10 X	2.5			
dNTP	2.5 mM	2.0			
primer 1	10 pmol/ μ l	0.5			
primer 2	10 pmol/ μ l	0.5			
primer 3	10 pmol/ μ l	2.0			
primer 4	10 pmol/ μ l	2.0			
DNA		1.0			
Taq		0.2			
total		25			

step	temp (°C)	time (sec)	note
1	94	180	
2	94	30*	
3	55	30*	
4	72	60*	*Repeat for 35 cycles
5	72	300	


Marker

100 bp ladder (Invitrogen, Cat. 15628-050)

Gel

2% agarose in 1 X TAE (100 V, 30 min)

PCR products

primer_set	product_size	product
primer 1	193 bp	Tg
primer 3	324 bp	internal control (IL-2)

Comment