

RBRC 01659

Strain name C.FVB-Tg(Itgax-DTR/EGFP)57Lan/Rbrc

Primer	primer_name	primer_seq	length	Reference
1	promoter	CCTAATGAACATATCCATTGCTTCTG	26	RIKEN BRC
2	GFP-Full-R	CTTGACAGCTCGTCCATGCCGAG	24	RIKEN BRC
3	oIMR0042	CTAGGCCACAGAATTGAAAGATCT	24	JAX Genotyping Protocol
4	oIMR0043	GTAGGTGGAAATTCTAGCATCATCC	25	JAX Genotyping Protocol

### Reaction Components

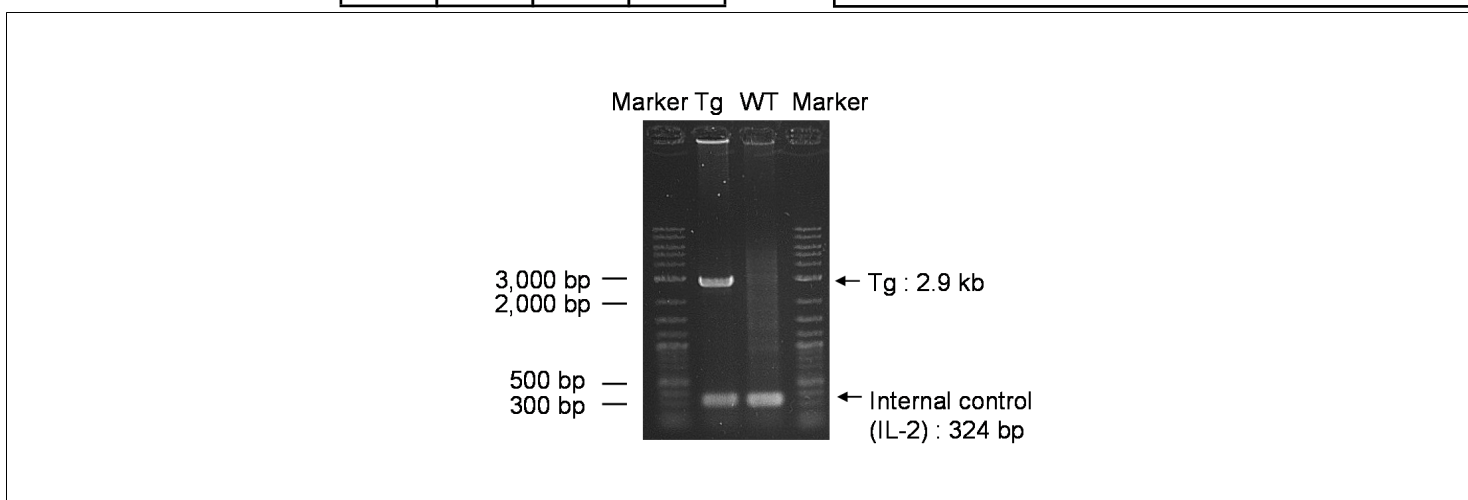
Enzyme

### Reaction Conditions

step	temp (°C)	time (sec)	note
1	94	120	
2	98	10*	
3	60	30*	
4	68	240*	*Repeat for 30 cycles

Reagent	Conc	Reaction 1	2	3	4	(μL)
H2O		0.8				
PCR buffer	2 X	10.0				
dNTP	2.0 mM	4.0				
primer 1	10 pmol/μl	1.0				
primer 2	10 pmol/μl	1.0				
primer 3	10 pmol/μl	1.0				
primer 4	10 pmol/μl	1.0				
DNA		1.0				
Taq	1 U/μl	0.2				
<b>total</b>		20				

<b>Marker</b>	2-Log DNA Ladder (NEB, Cat. N3200)
<b>Gel</b>	1% agarose in 1 X TAE (100 V, 30 min)



primer_set	product_size	product (allele type)	
primer 1	primer 2	2.9 kb	Tg
primer 3	primer 4	324 bp	Internal control (IL-2)

### Comment

Novagen KOD Xtreme™ Hot Start DNA Polymerase can be purchased from EMD.

RBRC 01659

Strain name C.FVB-Tg(Itgax-DTR/EGFP)57Lan/Rbrc

Primer	primer_name	primer_seq	length	Reference
1	promoter	CCTAATGAACATATCCATTGCTTCTG	26	RIKEN BRC
2	DTR2	TCAGTGGAATTAGTCATGCC	21	Immunity, 17, 211-220 (2002).
3	oIMR0042	CTAGGCCACAGAATTGAAAGATCT	24	JAX Genotyping Protocol
4	oIMR0043	GTAGGTGGAAATTCTAGCATCATCC	25	JAX Genotyping Protocol

### Reaction Components

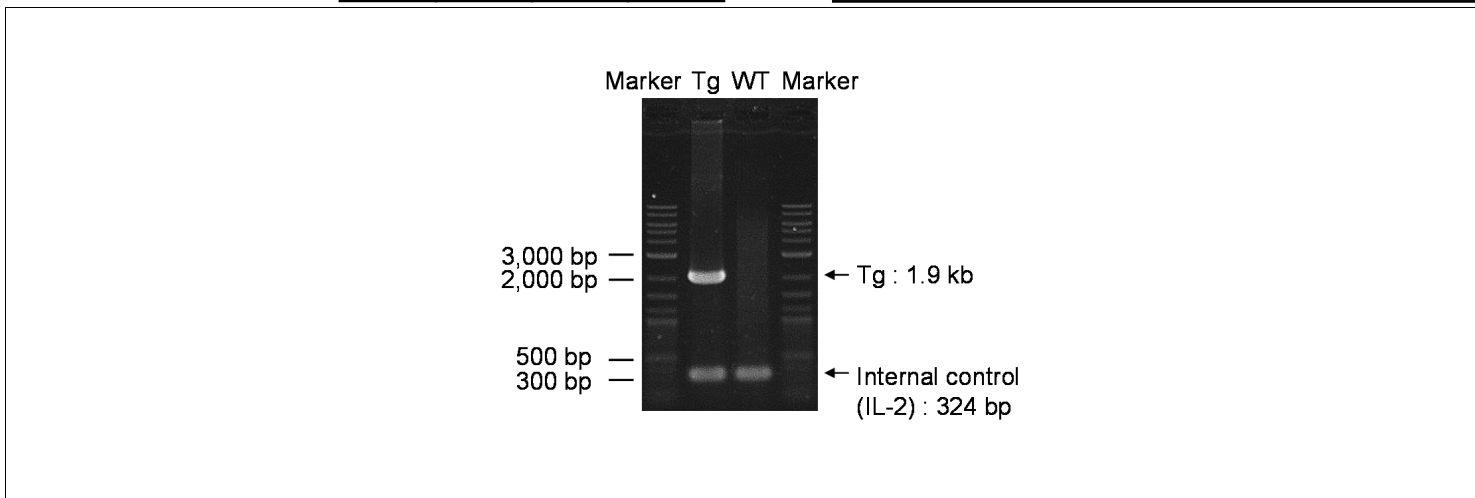
Enzyme TOYOBO KOD FX (Code.No : KFX-101)

Reagent	Conc	Reaction 1	2	3	4	( $\mu$ L)
H2O		0.8				
PCR buffer	2 X	10.0				
dNTP	2.0 mM	4.0				
primer 1	10 pmol/ $\mu$ l	1.0				
primer 2	10 pmol/ $\mu$ l	1.0				
primer 3	10 pmol/ $\mu$ l	1.0				
primer 4	10 pmol/ $\mu$ l	1.0				
DNA		1.0				
Taq	1 U/ $\mu$ l	0.2				
<b>total</b>		20				

### Reaction Conditions

step	temp (°C)	time (sec)	note
1	94	120	
2	98	10*	
3	60	30*	
4	68	180*	*Repeat for 30 cycles

Marker 2-Log DNA Ladder (NEB, Cat. N3200)  
 Gel 1% agarose in 1 X TAE (100 V, 30 min)



primer_set	product_size	product (allele type)
primer 1 primer 2	1.9 kb	Tg
primer 3 primer 4	324 bp	Internal control (IL-2)

### Comment

Novagen KOD Xtreme™ Hot Start DNA Polymerase can be purchased from EMD.

RBRC 01659

Strain name BALB/c-DTR mice

Primer	primer_name	primer_seq	length	Reference
1	DTR1	GCCACCATGAAGCTGCTGCCG	21	Depositor's primer
2	DTR2	TCAGTGGGAATTAGTCATGCC	21	Depositor's primer
3	oIMR0042	CTAGGCCACAGAATTGAAAGATCT	24	Internal control (IL-2) JAX Genotyping Protocol
4	oIMR0043	GTAGGTGGAAATTCTAGCATCATCC	25	Internal control (IL-2) JAX Genotyping Protocol

**Reaction Components**

Enzyme

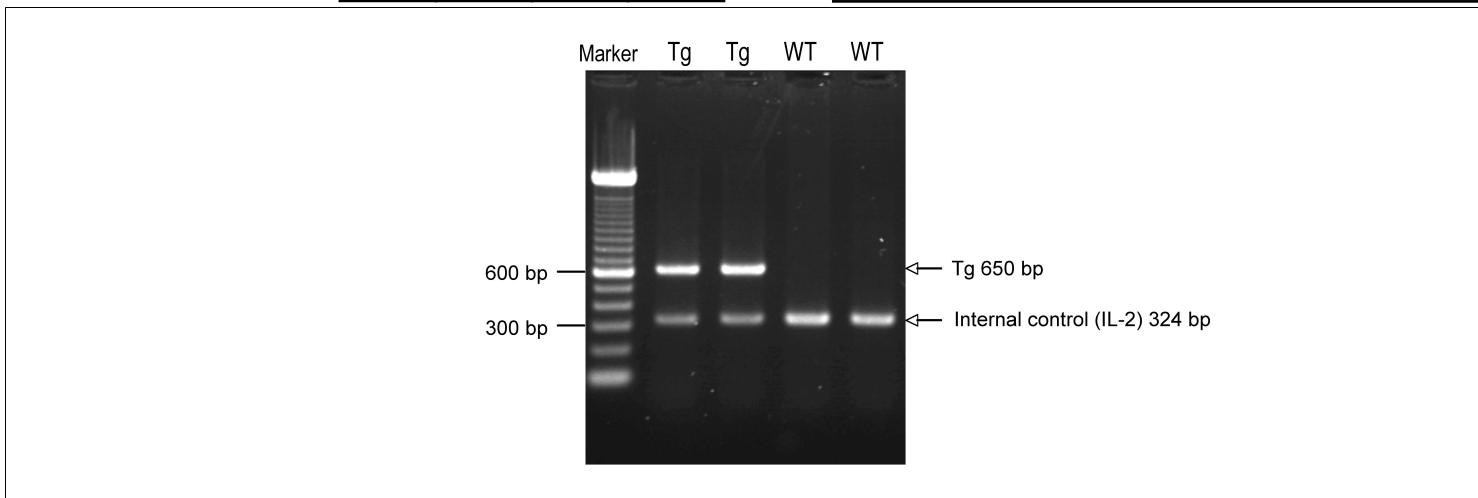
**Reaction Conditions**

step	temp (°C)	time (sec)	note
1	94	180	
2	94	30*	
3	60	30*	
4	72	60*	*Repeat for 35 cycles
5	72	300	

Reagent	Conc	Reaction 1	2	3	4	(μL)
H2O		15.3				
PCR buffer	10 X	2.5				
dNTP	2.5 mM	2.0				
primer 1	10 pmol/μl	1.0				
primer 2	10 pmol/μl	1.0				
primer 3	10 pmol/μl	1.0				
primer 4	10 pmol/μl	1.0				
DNA		1.0				
Taq		0.2				
<b>total</b>		25				

**Marker**

**Gel**



primer_set	product_size	product (allele type)	
primer 1	primer 2	650 bp	Tg
primer 3	primer 4	324 bp	Internal control (IL-2)

**Comment**

--