

# PCR protocol

RBRC 01691

Strain name CNR dA

Primer	primer_name	primer_seq	length	
1	NA-F	GGTGAGTTGCCAGACAAATTC	21	Depositor's primer
2	Primer B	GCCCTGCAAATATCATCAAG	20	Depositor's primer

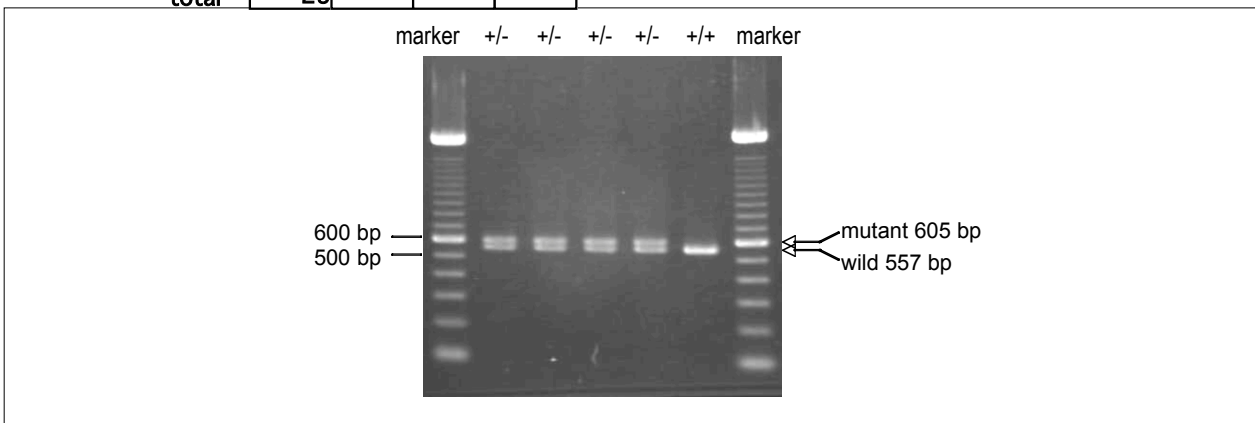
### Reaction Components

Enzyme Roche Taq (Cat. No. BM1418432)

### Reaction Conditions

	Conc	Run 1	Run 2	Run 3	Run 4
H2O		17.3			
PCR buffer	10 X	2.5			
dNTP	2.5 mM	2.0			
primer 1	10 pmol/ $\mu$ l	1.0			
primer 2	10 pmol/ $\mu$ l	1.0			
DNA		1.0			
Taq		0.2			
<b>total</b>		<b>25</b>			

step	temp (°C)	time (sec)	note
1	94	180	
2	94	30*	
3	60	30*	
4	72	60*	*Repeat for 35 cycles
5	72	300	



**Marker**  
100 bp ladder (Invitrogen, Cat. 15628-050)

**Gel**

PCR products		product_size	product
primer_1	primer_2		
primer 1	primer 2	605 bp	KO
primer 1	primer 2	557 bp	WT

Comment