

# PCR protocol

RBRC 01770

 Strain name MSM/Ms-tyr<sup>c</sup>/Rin

Primer	primer_name	primer_seq	length	
1	C57BL/6	cttcatgggtttcaactgcggaaacag	27	RIKEN BRC
2	Tyr<c>	cttcatgggtttcaactgcggaaacac	27	RIKEN BRC
3	common	gatgctgggctgagtaagtagg	23	RIKEN BRC

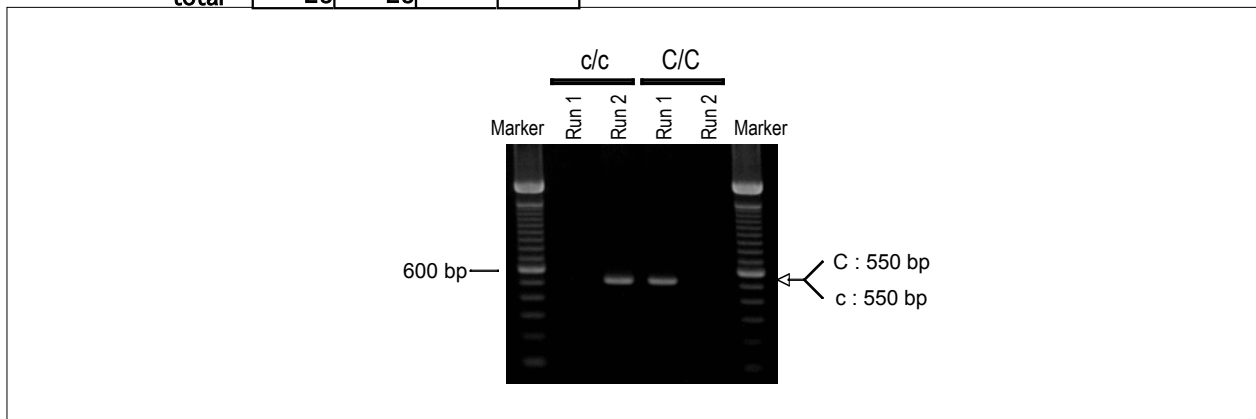
## Reaction Components

Enzyme Roche Taq (Cat. No. BM1418432)

## Reaction Conditions

step	temp (°C)	time (sec)	note
1	94	180	
2	94	30*	
3	60	30*	
4	72	60*	*Repeat for 35 cycles
5	72	300	

Conc	Run 1	Run 2	Run 3	Run 4
H2O	17.3	17.3		
PCR buffer	2.5	2.5		
dNTP	2.0	2.0		
primer 1	1.0	0		
primer 2	10 pmol/μl	0	1.0	
primer 3	10 pmol/μl	1.0	1.0	
DNA	1.0	1.0		
Taq	0.2	0.2		
total	25	25		



## Marker

100 bp ladder (Invitrogen, Cat. 15628-050)

## Gel

2% agarose in 1 X TAE (100 V, 30 min)

## PCR products

primer_set	product_size	product
primer 1	550 bp	C/C
primer 2	550 bp	c/c

## Comment