

BRC_No 01820

Strain name Glycophorin A (+/-) mouse

| Primer | | | | |
|--------|-------------|-----------------------|--------|-----|
| | primer_name | primer_seq | length | |
| 1 | GPA-3 | AACCTGTGCACTTAGCTTGC | 20 | |
| 2 | GPA-5 | CTTATCACACGGCCCCTACTG | 21 | |
| 3 | Neo5 | TCCTGCCGAGAAAGTATCCA | 20 | neo |
| 4 | Neo3 | GTCAAGAAGGCGATAGAAGG | 20 | neo |
| | | | | |
| | | | | |
| | | | | |
| | | | | |

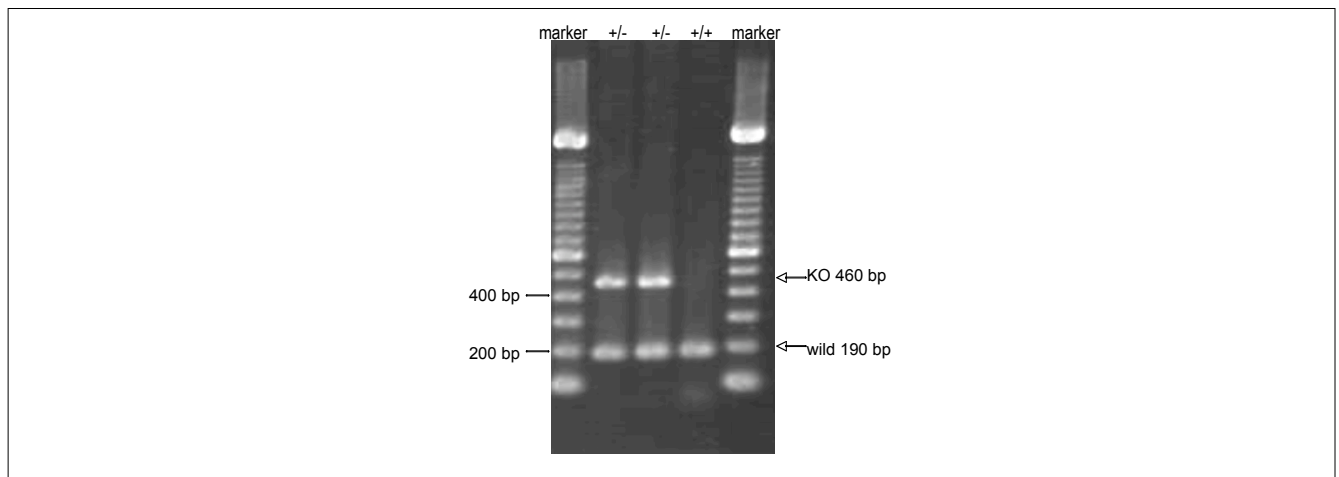
Reaction Components

Enzyme TaKaRa Ex Taq (Cat. No. RR001A)

| | Conc | Run 1 | Run 2 | Run 3 |
|------------|------------------|-------|-------|-------|
| H2O | | 15.3 | | |
| PCR buffer | 10 X | 2.5 | | |
| dNTP | 2.5 mM | 2.0 | | |
| primer 1 | 10 pmol/ μ l | 1.0 | | |
| primer 2 | 10 pmol/ μ l | 1.0 | | |
| primer 3 | 10 pmol/ μ l | 1.0 | | |
| primer 4 | 10 pmol/ μ l | 1.0 | | |
| DNA | | 1.0 | | |
| Taq | | 0.2 | | |
| total | | 25 | | |

Reaction Conditions

| step | temp (°C) | time (sec) | note |
|------|-----------|------------|-----------------------|
| 1 | 94 | 180 | |
| 2 | 94 | 30* | |
| 3 | 55 | 30* | |
| 4 | 72 | 60* | *Repeat for 30 cycles |
| 5 | 72 | 300 | |
| | | | |
| | | | |
| | | | |
| | | | |
| | | | |



Marker

100 bp ladder (Invitrogen, Cat. 15628-050)

Gel

2% agarose in 1 X TAE (100 V, 30 min)

PCR products

| primer_set | product_size | product |
|-------------------|--------------|---------|
| primer 1 primer 2 | 190 bp | wild |
| primer 3 primer 4 | 460 bp | KO |
| | | |
| | | |

Comment