

PCR protocol

RBRC 02337

Strain name Topoisomerase II aloha knockout mouse

Primer	primer_name	primer_seq	length
1	wild type allele	GTGAAAGGATTCCGCAGTTACGTG	24
2	wild type allele	CTGATGAGCCTTCACTGCAACC	22
3	Neo3	GTCAAGAAGGCGATAGAAGG	20
4	Neo5	TCCTGCCGAGAAAGTATCCA	20

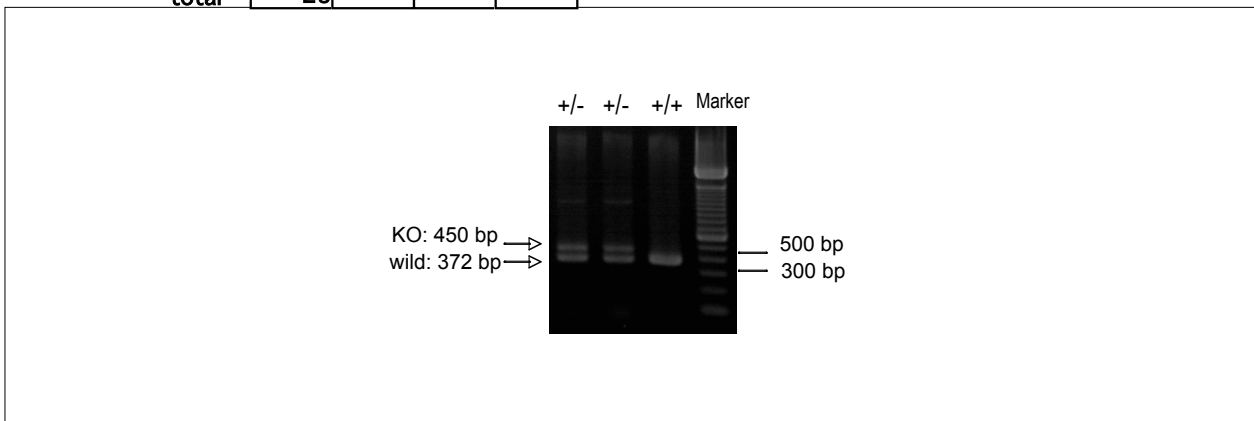
Reaction Components

Enzyme TaKaRa Ex Taq (Cat. No. RR001A)

Reaction Conditions

step	temp (°C)	time (sec)	note
1	94	180	
2	94	30*	
3	60	30*	
4	72	60*	*Repeat for 30 cycles
5	72	300	

Conc	Run 1	Run 2	Run 3	Run 4
H2O	15.3			
PCR buffer	2.5			
dNTP	2.0			
primer 1	1.0			
primer 2	1.0			
primer 3	1.0			
primer 4	1.0			
DNA	1.0			
Taq	0.2			
total	25			


Marker

100 bp ladder (Invitrogen, Cat. 15628-050)

Gel

2% agarose in 1 X TAE (100 V, 30 min)

PCR products

primer_set	product_size	product
primer 1	372 bp	wild
primer 3	450 bp	KO

Comment