

# PCR protocol

RBRC 02392

Strain name B6.129P2-Jundm2&lt;tm2&gt;

Primer	primer_name	primer_seq	length	
1	OKU23: mJDP2g 8724-8750	taggaaggccaactctcctgcaagcca	28	Depositor's primer
2	OKU24: mJDP2g 9023-9050R	tcagagcagagctgggaagtccggtgag	28	Depositor's primer
3	OKU25: Neo3'-2	ggccagctcattcctcccactcatgatc	28	Depositor's primer

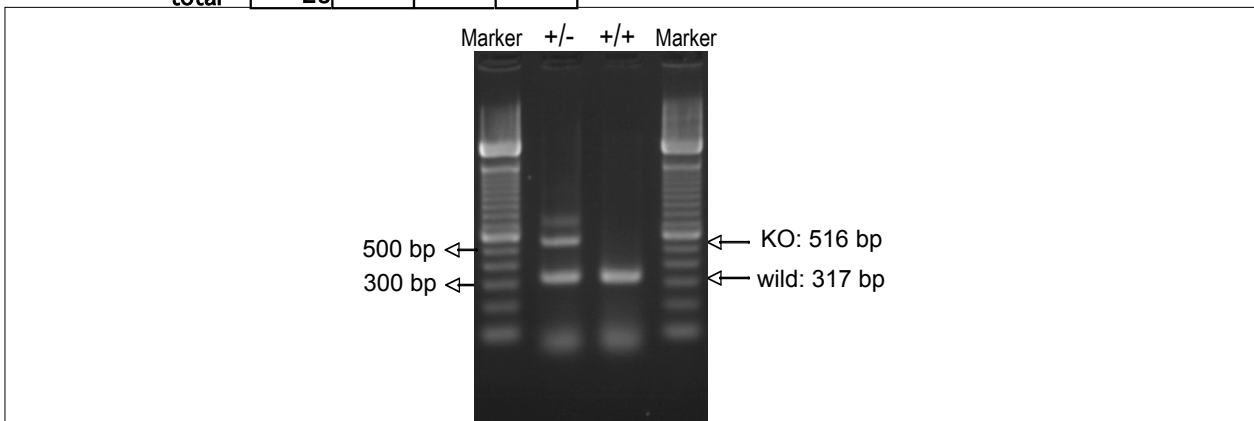
**Reaction Components**

Enzyme TaKaRa Ex Taq (Cat. No. RR001A)

**Reaction Conditions**

Conc	Run 1	Run 2	Run 3	Run 4
H2O	16.3			
PCR buffer	2.5			
dNTP	2.0			
primer 1	1.0			
primer 2	1.0			
primer 3	1.0			
DNA	1.0			
Taq	0.2			
total	25			

step	temp (°C)	time (sec)	note
1	94	180	
2	94	30*	
3	65	30*	
4	72	60*	*Repeat for 30 cycles
5	72	300	



**Marker**  
100 bp ladder (Invitrogen, Cat. 15628-050)

**Gel**  
2% agarose in 1 X TAE (100 V, 30 min)

PCR products		product_size	product
primer_1	primer_2		
primer 1	primer 2	317 bp	WT
primer 1	primer 3	516 bp	KO

Comment