

# PCR protocol

RBRC 02411

Strain name B6.129S2-Ptn&lt;tm1Tmu&gt;

Primer	primer_name	primer_seq	length
1	PTN-Forward(EX3-5)	AGGTGAAAAAGTCTGACTGTGGAG	24
2	PTN-Reverse(Ex3-3)	GCTCCAAACTGCTTCTCCAGTTG	24
3	PTN-Reverse	GCGAGGATCTCGTCGTGACCCATG	24

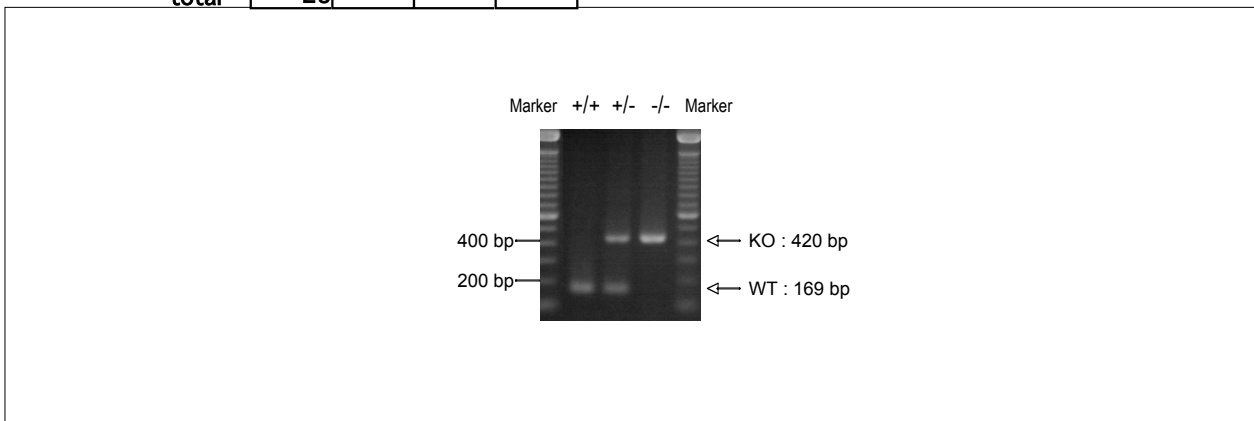
**Reaction Components**

Enzyme TaKaRa Ex Taq (Cat. No. RR001A)

**Reaction Conditions**

step	temp (°C)	time (sec)	note
1	94	180	
2	94	30*	
3	60	30*	
4	72	60*	*Repeat for 30 cycles
5	72	300	

Conc	Run 1	Run 2	Run 3	Run 4
H2O	16.3			
PCR buffer	2.5			
dNTP	2.0			
primer 1	1.0			
primer 2	1.0			
primer 3	1.0			
DNA	1.0			
Taq	0.2			
total	25			


**Marker**

100 bp ladder (Invitrogen, Cat. 15628-050)

**Gel**  
2% agarose in 1 X TAE (100 V, 30 min)

**PCR products**

primer_set	product_size	product
primer 1 primer 2	169 bp	wild
primer 1 primer 3	420 bp	KO

Comment