

# PCR protocol

RBRC 02422

Strain name B6.129S2-Mdk&lt;tm1Tmu&gt;

Primer	primer_name	primer_seq	length	
1	MK-Forward	TAACCCAGGTTTACCCTTA	20	
2	MK-Reverse	GTTGCAGGGCACCTTGAATGGAC	24	

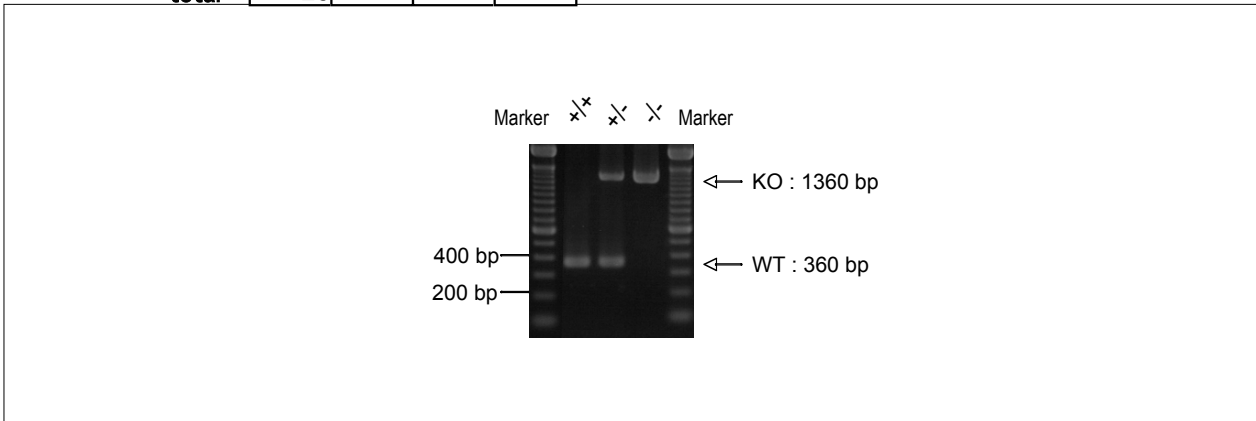
**Reaction Components**

Enzyme TaKaRa Ex Taq (Cat. No. RR001A)

**Reaction Conditions**

	Conc	Run 1	Run 2	Run 3	Run 4
H2O		17.3			
PCR buffer	10 X	2.5			
dNTP	2.5 mM	2.0			
primer 1	10 pmol/ $\mu$ l	1.0			
primer 2	10 pmol/ $\mu$ l	1.0			
DNA		1.0			
Taq		0.2			
<b>total</b>		<b>25</b>			

step	temp (°C)	time (sec)	note
1	94	180	
2	94	30*	
3	57	30*	
4	72	90*	*Repeat for 30 cycles
5	72	300	



**Marker**  
100 bp ladder (Invitrogen, Cat. 15628-050)

**Gel**  
2% agarose in 1 X TAE (100 V, 30 min)

PCR products		product_size	product
primer_set	primer_set		
primer 1	primer 2	360 bp	wild
primer 1	primer 2	1360 bp	KO

Comment