

RBRC 02778

Strain name B6.Cg-Lyst^{<bg-J>}Foxn1^{<nu>}/Nrs

Primer	primer_name	primer_seq	length	
1	common	CACCTACAATGCCTGCAGACTTCC	24	RIKEN BRC
2	WT	AAGGTAGAGGTAGATCTTACCTTATGATGG	30	RIKEN BRC
3	MT	AAGGTAGAGGTAGATCTTACCTTATGGGC	29	RIKEN BRC
4	common	CAGTACAGCACAGGGTCCTGGC	22	RIKEN BRC
5	nu_wild	TTGCCCTTGAGGAAGCGCCAG	22	RIKEN BRC
6	nu_mut	GTTGCCCTTGAGGAAGCGCCAG	22	RIKEN BRC

Reaction Components

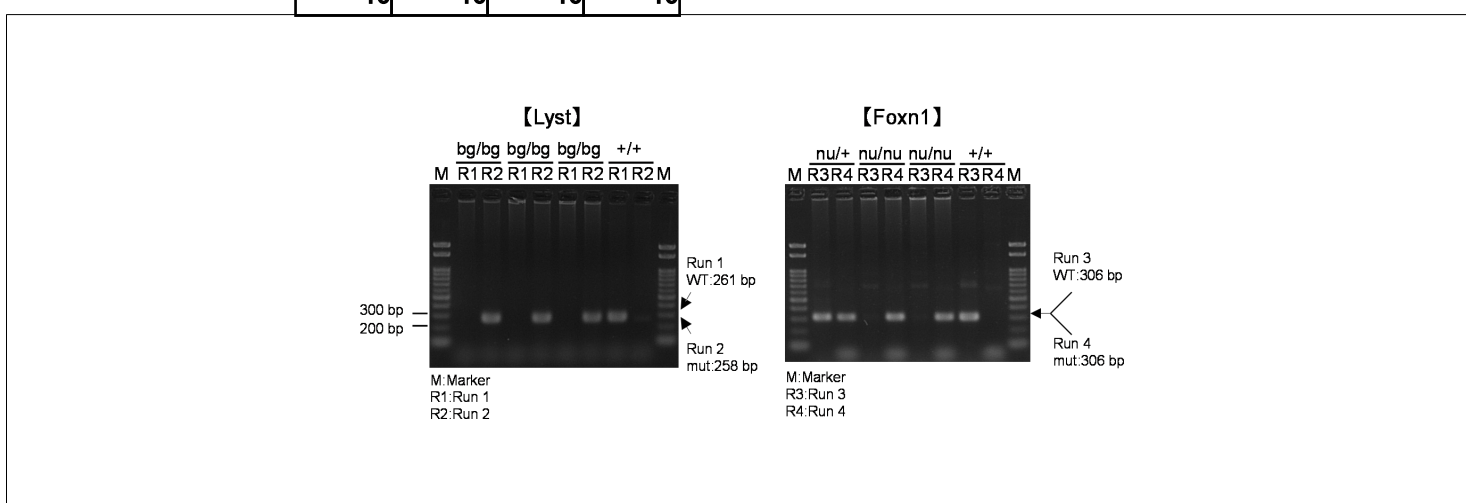
Enzyme

Reaction Conditions

step	temp (°C)	time (sec)	note
1	95	900	
2	94	30*	
3	65	90*	
4	72	60*	*Repeat for 30 cycles

	Conc	Run 1	Run 2	Run 3	Run 4
H2O		2.0	2.0	2.0	2.0
primer 1	10 pmol/μl	1.0	1.0	0	0
primer 2	10 pmol/μl	1.0	0	0	0
primer 3	10 pmol/μl	0	1.0	0	0
primer 4	10 pmol/μl	0	0	1.0	1.0
primer 5	10 pmol/μl	0	0	1.0	0
primer 6	10 pmol/μl	0	0	0	1.0
DNA		1.0	1.0	1.0	1.0
Master Mix	2 X	5.0	5.0	5.0	5.0
total		10	10	10	10

Separated PCR



Marker	PCR products	primer_set	product_size	product
Gene Ladder 100 (Wako, Cat. 316-06951)	primer 1	primer 2	261 bp	WT
	primer 1	primer 3	258 bp	mutant
	primer 4	primer 5	306 bp	WT
	primer 4	primer 6	306 bp	mutant

Comment

--

Gel
2% agarose in 1 X TAE (100 V, 30 min)