

RBRC 02829      Strain name B6.B6C3-Tg(Th-SNCA\*130m)1702Yosh

Primer	primer_name	primer_seq	length		
1	P1	GTGGCTGCTGCTGAGAAAAC	20		Depositor's primer
2	P2	GTGGGGCTCCTTCTTCATTC	20		Depositor's primer
3	oIMR0015	CAAATGTTGCTTGTCTGGTG	20	Internal control (Tcrd)	JAX Genotyping Protocol
4	oIMR0016	GTCAGTCGAGTGCACAGTTT	20	Internal control (Tcrd)	JAX Genotyping Protocol

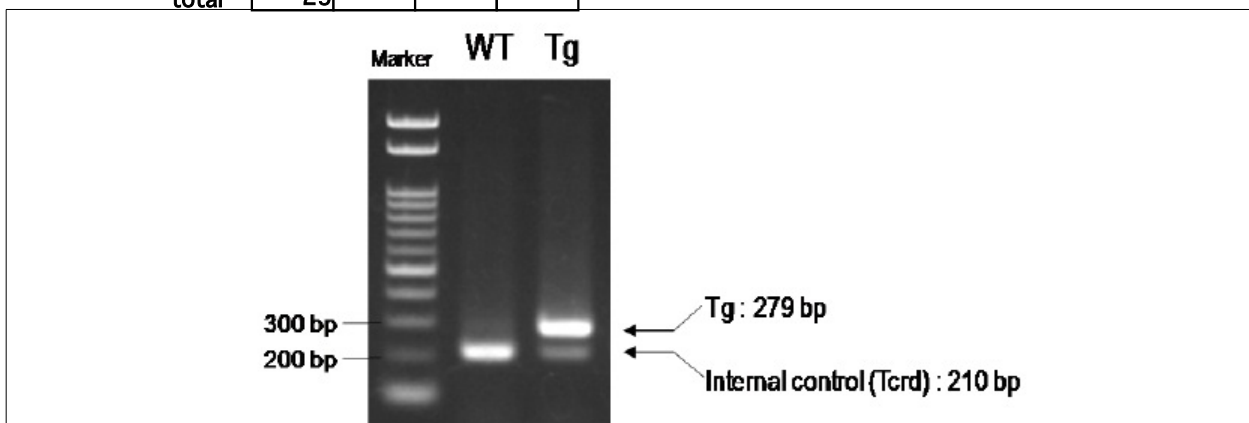
### Reaction Components

Enzyme TaKaRa Ex Taq (Cat. No. RR001A)

### Reaction Conditions

step	temp (°C)	time (sec)	note
1	94	180	
2	94	30*	
3	60	30*	
4	72	60*	*Repeat for 30 cycles
5	72	300	

	Conc	Run 1	Run 2	Run 3	Run 4
H2O		15.3			
PCR buffer	10 X	2.5			
dNTP	2.5 mM	2.0			
primer 1	10 pmol/µl	1.0			
primer 2	10 pmol/µl	1.0			
primer 3	10 pmol/µl	1.0			
primer 4	10 pmol/µl	1.0			
DNA		1.0			
Taq		0.2			
<b>total</b>		25			



**Marker**  
Gene Ladder 100 (Wako, Cat. 316-06951)

**Gel**  
2% agarose in 1 X TAE (100 V, 35 min)

### PCR products

primer_set	product_size	product
primer 1 primer 2	279 bp	Tg
primer 3 primer 4	210 bp	Internal control (Tcrd)

Comment

RBRC 02829 Strain name B6.B6C3-Tg(Th-SNCA\*130m)1702Yosh

Primer	primer_name	primer_seq	length	
1		CCTGTGACAGTGGATGCAATTG	22	RIKEN BRC
2		GTGGGGCTCCTTCTTCATTC	20	Depositor's primer
3	oIMR0042	CTAGGCCACAGAATTGAAAGATCT	24	JAX Genotyping Protocol
4	oIMR0043	GTAGGTGGAAATTCTAGCATCATCC	25	JAX Genotyping Protocol

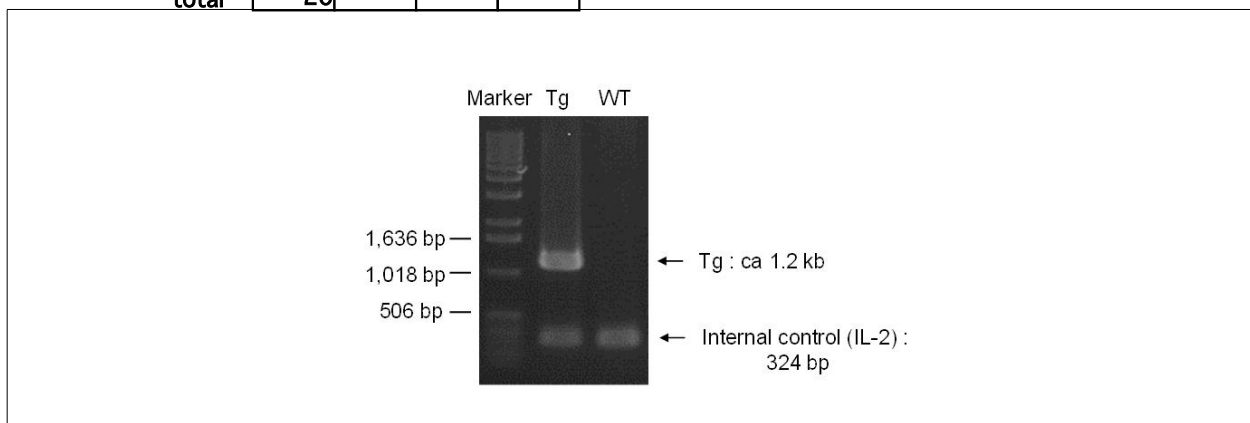
### Reaction Components

Enzyme TOYOBO KOD FX (Code.No : KFX-101)

### Reaction Conditions

	Conc	Run 1	Run 2	Run 3	Run 4
H2O		0.8			
PCR buffer	2 X	10.0			
dNTP	2.0 mM	4.0			
primer 1	10 pmol/ $\mu$ l	1.0			
primer 2	10 pmol/ $\mu$ l	1.0			
primer 3	10 pmol/ $\mu$ l	1.0			
primer 4	10 pmol/ $\mu$ l	1.0			
DNA		1.0			
Taq	1 U/ $\mu$ l	0.2			
<b>total</b>		<b>20</b>			

step	temp (°C)	time (sec)	note
1	94	120	
2	98	10*	
3	60	30*	
4	68	120*	*Repeat for 30 cycles



**Marker**  
1 kb DNA ladder (Invitrogen, Cat. 15615-024)

**Gel**  
1% agarose in 1 X TAE (100 V, 30 min)

### PCR products

primer_set	product_size	product
primer 1 primer 2	ca 1.2 kb	Tg
primer 3 primer 4	324 bp	Internal control (IL-2)

**Comment** Novagen KOD Xtreme™ Hot Start DNA Polymerase can be purchased from EMD.