

RBRC 03309

Strain name BIT-212 KO

Primer	primer_name	primer_seq	length	Reference
1	promoter	GATAGAAGGCCTCTGGTCTGTCTC	24	RIKEN BRC
2	intron 2	GTGGCAGTAGGAGCTGAGGG	20	RIKEN BRC
3	olMR0214	CCGGAGAACCTGCGTGCAATCC	22	JAX Genotyping Protocol

### Reaction Components

Enzyme

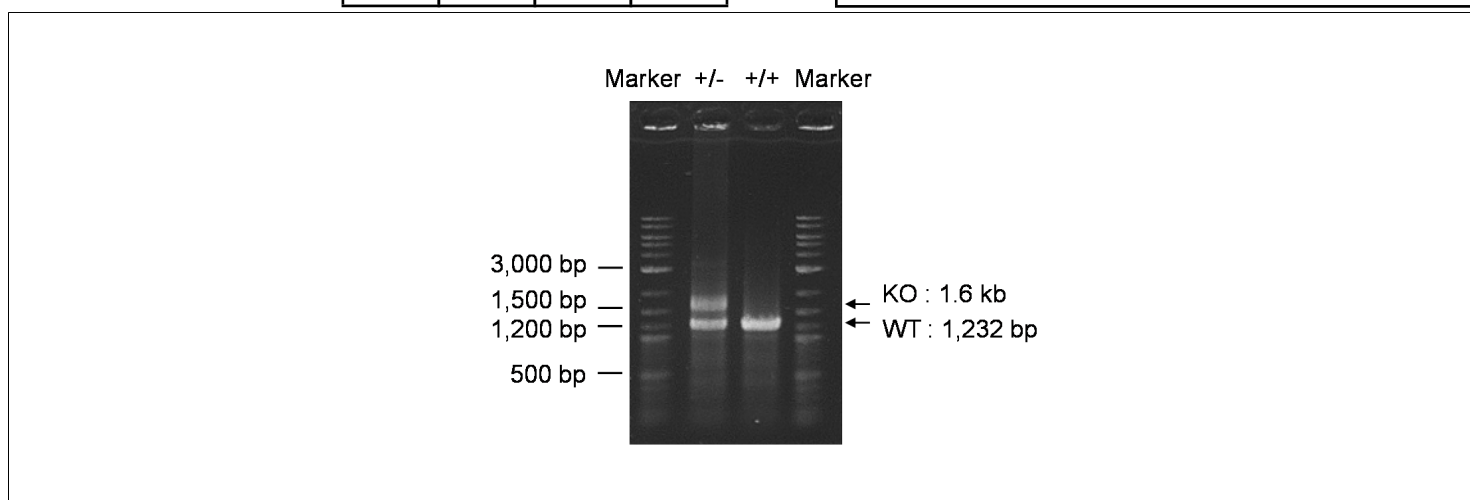
### Reaction Conditions

step	temp (°C)	time (sec)	note
1	94	120	
2	98	10*	
3	60	30*	
4	68	180*	*Repeat for 30 cycles

Reagent	Conc	Reaction 1	2	3	4	( $\mu$ L)
H2O		1.8				
PCR buffer	2 X	10.0				
dNTP	2.0 mM	4.0				
primer 1	10 pmol/ $\mu$ l	1.0				
primer 2	10 pmol/ $\mu$ l	1.0				
primer 3	10 pmol/ $\mu$ l	1.0				
DNA		1.0				
Taq	1 U/ $\mu$ l	0.2				
<b>total</b>		20				

**Marker**

**Gel**



primer_set	product_size	product (allele type)
primer 1	primer 2	1,232 bp WT
primer 1	primer 3	1.6 kb KO

### Comment

Novagen KOD Xtreme™ Hot Start DNA Polymerase can be purchased from EMD.