

# PCR protocol

RBRC 03950

Strain name B6.129P2-Psmb8&lt;tm1Hjf&gt;

Primer	primer_name	primer_seq	length	
1	LMP7-S	GACACCCATTAAGTGGGCTCTACTCGGAAA	30	Depositor's primer
2	LMP7-delAS	GCTTGAGACCTAGGCCATCTAATGTGTCGT	30	Depositor's primer
3	LMP7-neoAS	TATTGCCGATCCCCTCAGAAGAACTCGTCA	30	Depositor's primer

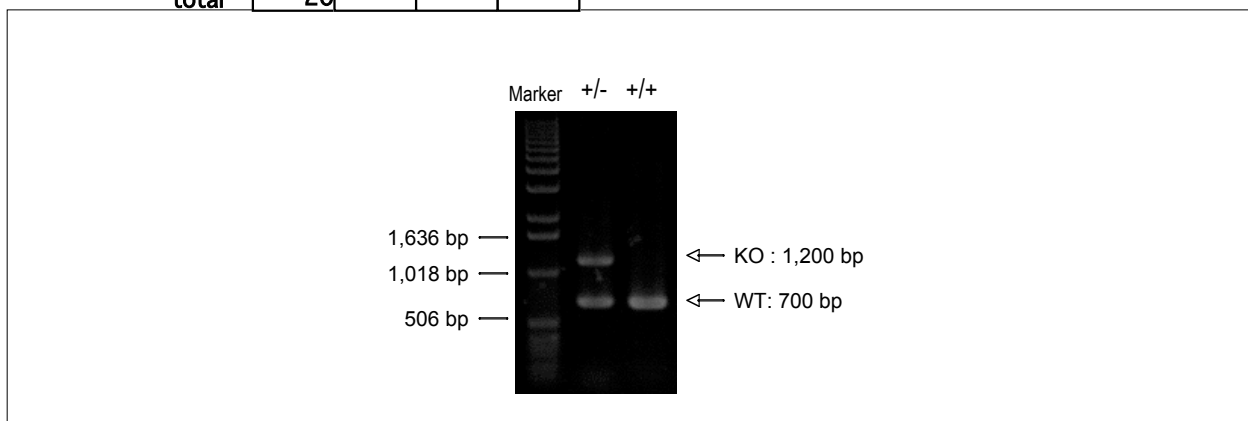
## Reaction Components

Enzyme

## Reaction Conditions

	Conc	Run 1	Run 2	Run 3	Run 4
H2O		12.3			
PCR buffer	10 X	2.0			
dNTP	2.5 mM	1.6			
primer 1	10 pmol/μl	1.0			
primer 2	10 pmol/μl	1.0			
primer 3	10 pmol/μl	1.0			
DNA		1.0			
Taq	5U/μl	0.1			
<b>total</b>		<b>20</b>			

step	temp (°C)	time (sec)	note
1	94	180	
2	94	30*	
3	60	30*	
4	72	60*	*Repeat for 30 cycles
5	72	300	



**Marker**  
 1 kb DNA ladder (Invitrogen, Cat. 15615-024)

**Gel**  
 1% agarose in 1 X TAE (100 V, 30 min)

PCR products		product_size	product
primer_1	primer_2		
primer 1	primer 2	700 bp	WT
primer 1	primer 3	1200 bp	KO

Comment