

# PCR protocol

RBRC 04394

Strain name B6;129-Lyz2&lt;tm1(DTR)Mtka&gt;

Primer	primer_name	primer_seq	length	
1	LysM-F	ATGCATTCCAAGAGATGAGG	20	Depositor's primer
2	LysM-R	CCATGGCACACAATGTCCCTTCC	23	Depositor's primer
3	DTR-R	GCAGCCTGCACCTGAGG	17	Depositor's primer

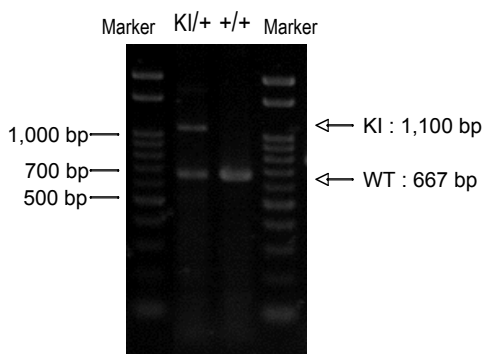
## Reaction Components

Enzyme TaKaRa Ex Taq (Cat. No. RR001A)

	Conc	Run 1	Run 2	Run 3	Run 4
H2O		12.3			
PCR buffer	10 X	2.0			
dNTP	2.5 mM	1.6			
primer 1	10 pmol/ $\mu$ l	1.0			
primer 2	10 pmol/ $\mu$ l	1.0			
primer 3	10 pmol/ $\mu$ l	1.0			
DNA		1.0			
Taq	5U/ $\mu$ l	0.1			
total		20			

## Reaction Conditions

step	temp (°C)	time (sec)	note
1	94	180	
2	94	30*	
3	60	30*	
4	72	60*	*Repeat for 30 cycles
5	72	300	



Marker  
Gene Ladder 100 (Wako, Cat. 316-06951)  
Gel  
2% agarose in 1 X TAE (100 V, 30 min)

PCR products			
primer_set	product_size	product	
primer 1	primer 2	667 bp	WT
primer 1	primer 3	1,100 bp	KI

Comment