

RBRC 05151

Strain name B6;129S6-Gt(ROSA)26Sor<tm1.1(CAG-eNpHR2/EYFP)Imayo>

Primer	primer_name	primer_seq	length	Reference
1	R26F2	AAAGTCGCTCTGAGTTGTTAT	21	Nature Genetics 21, 70-71 (1999).
2	oIMR0316	GGAGCGGGAGAAATGGATATG	21	JAX genotyping protocol/Nature Genetics 21, 70-71 (1999).
3	LFcheck-HR-rv	TGAAGGGCCACGGCACTCTCGGTC	24	Depositor's primer

**Reaction Components**

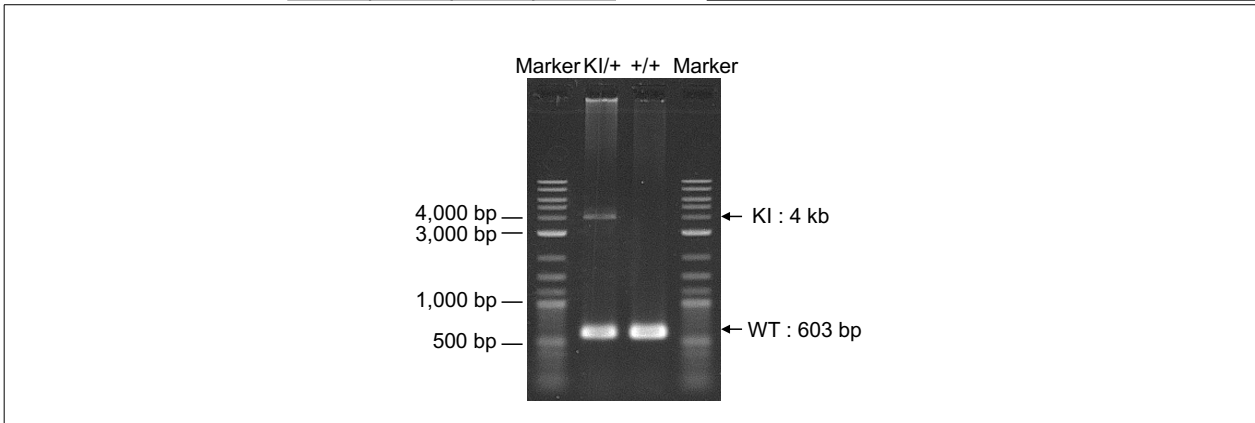
**Enzyme** TOYOBO KOD FX (Code.No : KFX-101)

Reagent	Conc	Reaction 1	2	3	4	
H <sub>2</sub> O		1.8				
PCR buffer	2 X	10.0				
dNTP	2.0 mM	4.0				
primer 1	10 pmol/μl	1.0				
primer 2	10 pmol/μl	1.0				
primer 3	10 pmol/μl	1.0				
DNA		1.0				
Taq	1 U/μl	0.2				
<b>total</b>		20				

**Reaction Conditions**

step	temp (°C)	time (sec)	note
1	94	120	
2	98	10*	
3	60	30*	
4	68	300*	*Repeat for 30 cycles

**Marker** 2-Log DNA Ladder (NEB, Cat. N3200)  
**Gel** 1% agarose in 1 X TAE (100 V, 30 min)



primer_set	product_size	product (allele type)	
primer 1 primer 2	603 bp	WT	+/+ (wild-type): 603 bp KI/+ (heterozygous): 603 bp and 4 kb
primer 1 primer 3	4 kb	KI	

**Comment** [Standard PCR](#)

Novagen KOD Xtreme™ Hot Start DNA Polymerase can be purchased from EMD.

RBRC 05151

Strain name B6;129S6-Gt(ROSA)26Sor<tm1.1(CAG-eNpHR2/EYFP)Imayo>

Primer	primer_name	primer_seq	length	Reference
1	R26F2	AAAGTCGCTCTGAGTTGTTAT	21	Depositor's primer
2	oIMR0316	GGAGCGGGAGAAATGGATATG	21	JAX Genotyping Protocol
3	oIMR0315	GCGAAGAGTTTGTCTCAACC	21	JAX Genotyping Protocol

### Reaction Components

Enzyme TaKaRa Ex Taq (Cat. No. RR001A)

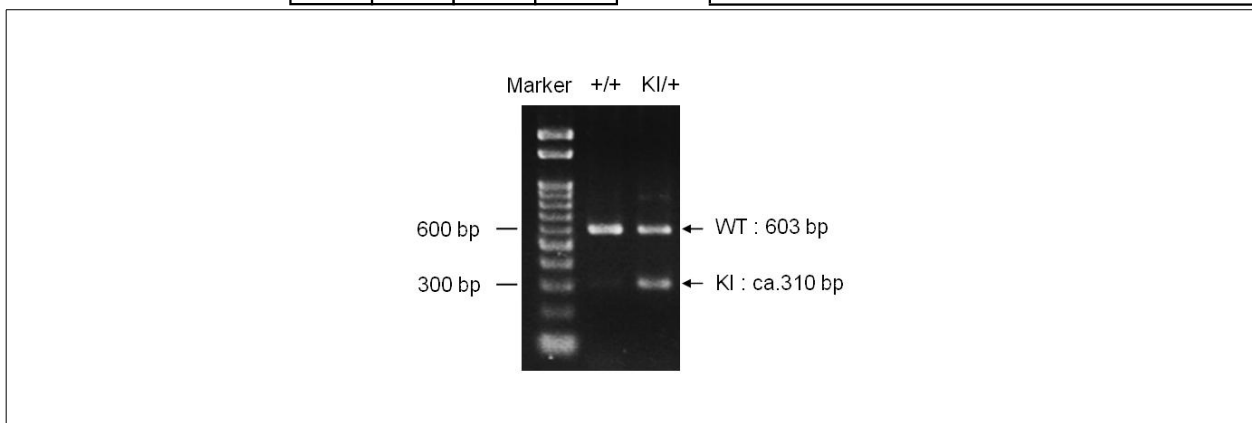
### Reaction Conditions

step	temp (°C)	time (sec)	note
1	94	180	
2	94	30*	
3	60	30*	
4	72	60*	*Repeat for 30 cycles
5	72	300	

Reagent	Conc	Reaction 1	2	3	4
H2O		12.3			
PCR buffer	10 X	2.0			
dNTP	2.5 mM	1.6			
primer 1	10 pmol/μl	1.0			
primer 2	10 pmol/μl	1.0			
primer 3	10 pmol/μl	1.0			
DNA		1.0			
Taq	5 U/μl	0.1			
<b>total</b>		20			

Marker Gene Ladder 100 (Wako, Cat. 316-06951)

Gel 2% agarose in 1 X TAE (100 V, 30 min)



primer_set	product_size	product (allele type)
primer 1 / primer 2	603 bp	WT
primer 1 / primer 3	ca 310 bp	KI

Comment [Standard PCR](#)