

RBRC 05243

Strain name B6;129B6-Pitx2c<tm1Hmd>

Primer	primer_name	primer_seq	length	Reference
1	Pitx2c-S	GTTAGGCCAACAGGGAAGC	19	Depositor's primer
2	Pitx2c-AS	TTCAGGGCTGGAAGTATCGGAGA	23	Depositor's primer
3	Pitx2c KI5'	TTGTGGTTTGTCCAAACTCATC	22	Depositor's primer

Reaction Components

Enzyme TOYOBO KOD FX (Code.No : KFX-101)

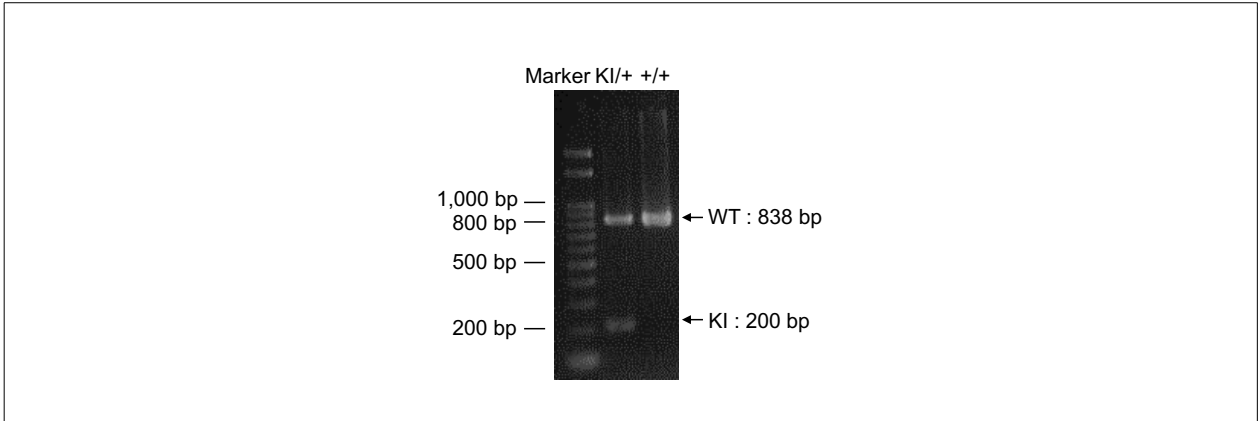
Reaction Conditions

step	temp (°C)	time (sec)	note
1	94	120	
2	98	10*	
3	60	30*	
4	68	60*	*Repeat for 30 cycles

Reagent	Conc	Reaction 1	2	3	4
H ₂ O		1.8			
PCR buffer	2 X	10.0			
dNTP	2.0 mM	4.0			
primer 1	10 pmol/μl	1.0			
primer 2	10 pmol/μl	1.0			
primer 3	10 pmol/μl	1.0			
DNA		1.0			
Taq	1 U/μl	0.2			
total		20			

Marker Gene Ladder 100 (Wako, Cat. 316-06951)

Gel 2% agarose in 1 X TAE (100 V, 30 min)



primer_set	product_size	product (allele type)	
primer 1	primer 2	838 bp	WT
primer 2	primer 3	ca 200 bp	KI

+/+ (wild-type): 838 bp
 KI/+ (heterozygous): 838 bp and 200 bp

Comment

Novagen KOD Xtreme™ Hot Start DNA Polymerase can be purchased from EMD.