

RBRC 05271

Strain name ICR-Tg(p16-luc)53Eiha/Rbrc

Primer	primer_name	primer_seq	length	Reference
1	exon3	GAAAGGCCACATCTTCACGCC	21	RIKEN BRC
2		TCCGCCCTTCTTGGCCTTTATGA	23	Genes Cells, 11, 1173-1182 (2006).
3	oIMR0042	CTAGGCCACAGAATTGAAAGATCT	24	JAX Genotyping Protocol
4	oIMR0043	GTAGGTGGAAATTCTAGCATCATCC	25	JAX Genotyping Protocol

**Reaction Components**

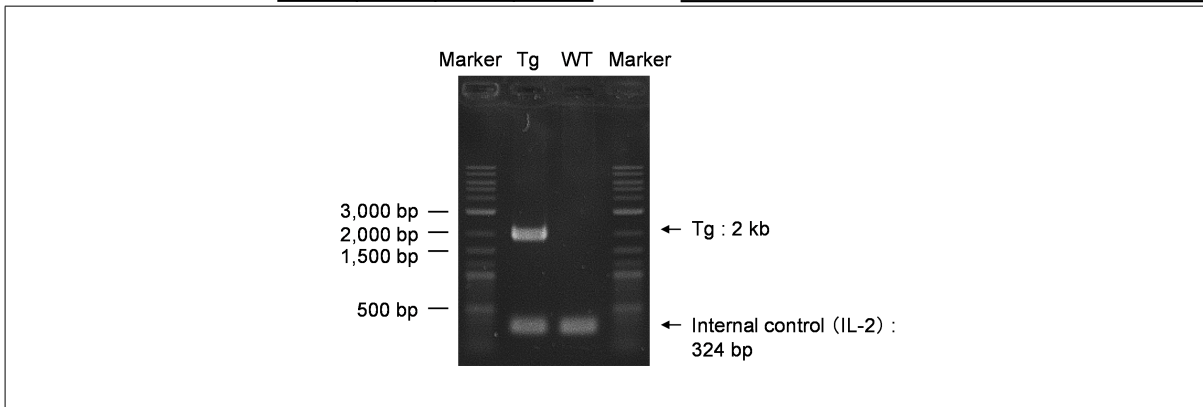
Enzyme TOYOBO KOD FX (Code.No : KFX-101)

**Reaction Conditions**

step	temp (°C)	time (sec)	note
1	94	120	
2	98	10*	
3	60	30*	
4	68	180*	*Repeat for 30 cycles

Reagent	Conc	Reaction 1	2	3	4	(μL)
H2O		0.8				
PCR buffer	2 X	10.0				
dNTP	2.0 mM	4.0				
primer 1	10 pmol/μl	1.0				
primer 2	10 pmol/μl	1.0				
primer 3	10 pmol/μl	1.0				
primer 4	10 pmol/μl	1.0				
DNA		1.0				
Taq	1 U/μl	0.2				
<b>total</b>		<b>20</b>				

**Marker** 2-Log DNA Ladder (NEB, Cat. N3200)  
**Gel** 1% agarose in 1 X TAE (100 V, 30 min)



primer_set	product_size	product (allele type)
primer 1 primer 2	2 kb	Tg
primer 3 primer 4	324 bp	Internal control (IL-2)

**Comment**

Novagen KOD Xtreme™ Hot Start DNA Polymerase can be purchased from EMD.

RBRC 05271

Strain name p16-luc (Acc. No. CDB0416T-53)

Primer	primer_name	primer_seq	length	
1		GCCACCATGGAAGACGCCAAAAACAT	26	Depositor's primer
2		TCCGCCCTTCTTGGCCTTTATGA	23	Depositor's primer
3	oIMR0042	CTAGGCCACAGAATTGAAAGATCT	24	JAX Genotyping Protocol
4	oIMR0043	GTAGGTGGAAATTCTAGCATCATCC	25	JAX Genotyping Protocol

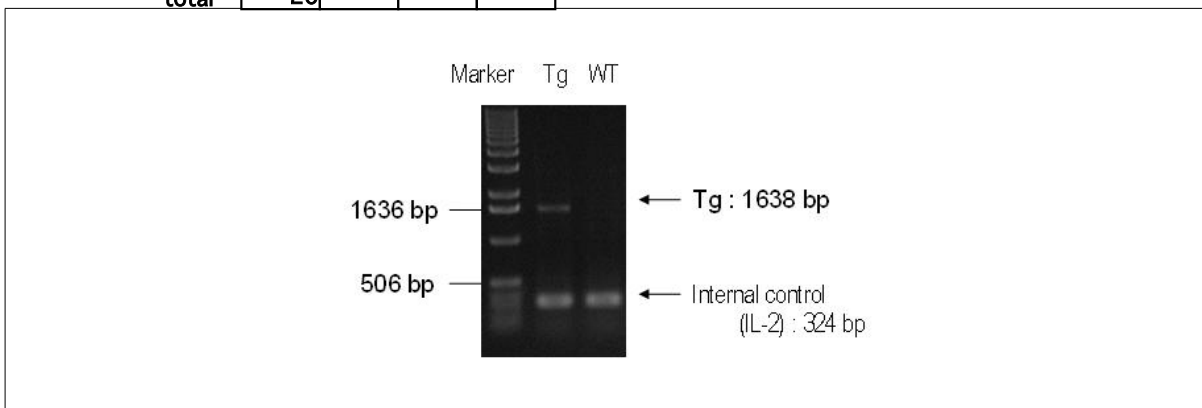
### Reaction Components

Enzyme TaKaRa LA Taq with GC buffer (Cat. No. RR02AG)

	Conc	Run 1	Run 2	Run 3	Run 4
H <sub>2</sub> O		2.9			
PCR buffer	2 X GC I	10.0			
dNTP	2.5 mM	2.0			
primer 1	10 pmol/μl	1.0			
primer 2	10 pmol/μl	1.0			
primer 3	10 pmol/μl	1.0			
primer 4	10 pmol/μl	1.0			
DNA		1.0			
Taq	5U/μl	0.1			
<b>total</b>		<b>20</b>			

### Reaction Conditions

step	temp (°C)	time (sec)	note
1	94	180	
2	94	30*	
3	60	30*	
4	72	120*	*Repeat for 30 cycles
5	72	300	



### Marker

1 kb DNA ladder (Invitrogen, Cat. 15615-024)

### Gel

1% agarose in 1 X TAE (100 V, 30 min)

### PCR products

primer_set	product_size	product
primer 1 / primer 2	1638 bp	Tg
primer 3 / primer 4	324 bp	Internal control (IL-2)

### Comment