

RBRC 05658

Strain name B6.Cg-Siglech<tm1.1Ksat>

Primer	primer_name	primer_seq	length	
1	Siglech-exon5-FW	GATTAGTCTCTCAGGTGAGTGATATGG	27	Depositor's primer
2	Siglech-exon5-Rev	GACATATTTTCAGTTAACAAATACAGTTCGT	30	Depositor's primer

Reaction Components

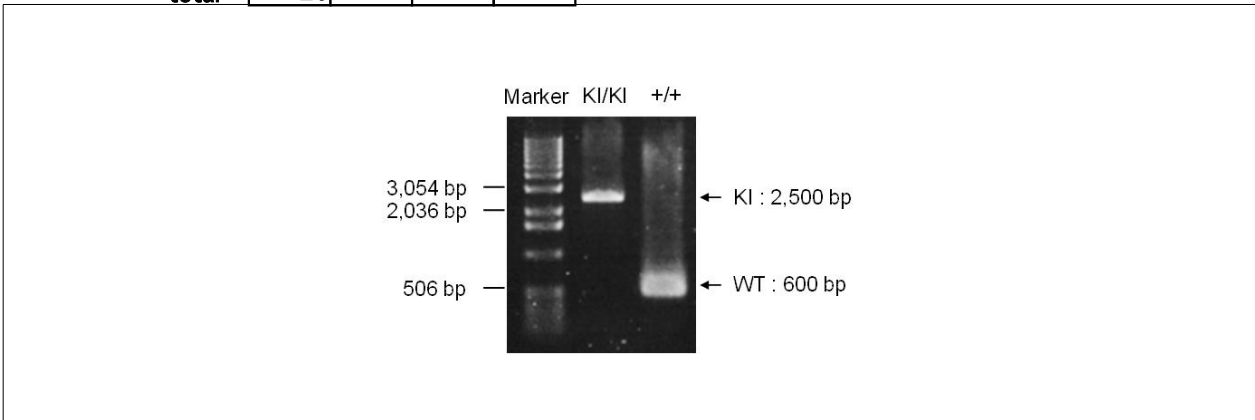
Enzyme TOYOBO KOD FX (Code.No : KFX-101)

Reaction Conditions

	Conc	Run 1	Run 2	Run 3	Run 4
H2O		2.6			
PCR buffer	2 X	10.0			
dNTP	2.0 mM	4.0			
primer 1	10 pmol/ μ l	1.0			
primer 2	10 pmol/ μ l	1.0			
DNA		1.0			
Taq	1 U/ μ l	0.4			
total		20			

step	temp (°C)	time (sec)	note
1	94	120	
2	98	10*	
3	60	30*	
4	68	180*	*Repeat for 30 cycles

Standard PCR



Marker
1 kb DNA ladder (Invitrogen, Cat. 15615-024)

Gel
1% agarose in 1 X TAE (100 V, 30 min)

PCR products			
	primer_set	product_size	product
primer 1	primer 2	600 bp	WT
primer 1	primer 2	2,500 bp	KI

Comment Novagen KOD Xtreme™ Hot Start DNA Polymerase can be purchased from EMD.