

RBRC 05846 Strain name B6.Cg-Tg(Tph2-tTA)1Ahky

| Primer | primer_name | primer_seq | length | |
|--------|-------------|---------------------------|--------|-------------------------|
| 1 | | GACTGTGGCCATCAGCAACCAG | 22 | RIKEN BRC |
| 2 | tTA_R | CCAGGGTCTCGTACTGCTTC | 20 | Depositor's primer |
| 3 | oIMR0042 | CTAGGCCACAGAATTGAAAGATCT | 24 | JAX Genotyping Protocol |
| 4 | oIMR0043 | GTAGGTGGAAATTCTAGCATCATCC | 25 | JAX Genotyping Protocol |
| | | | | |
| | | | | |
| | | | | |
| | | | | |
| | | | | |

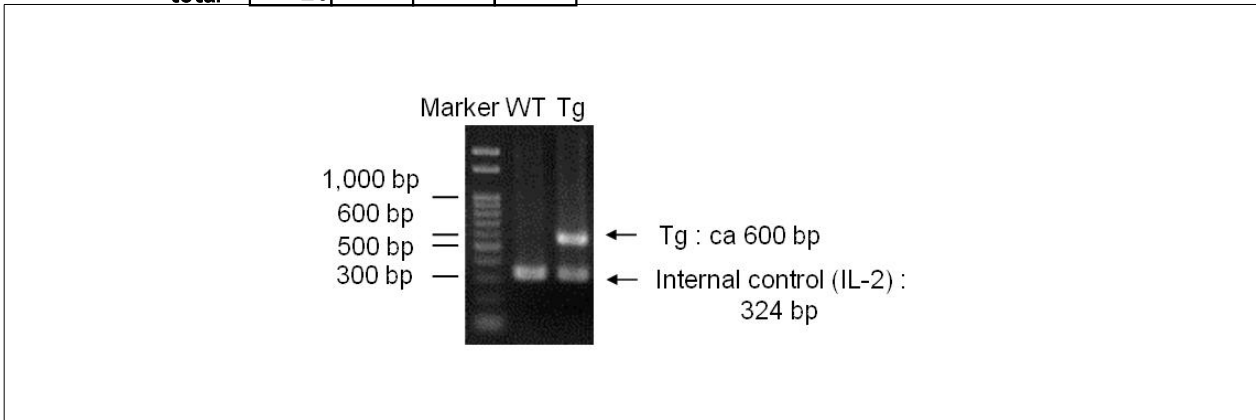
Reaction Components

Enzyme TOYOBO KOD FX (Code.No : KFX-101)

| | Conc | Run 1 | Run 2 | Run 3 | Run 4 |
|--------------|------------------|-----------|-------|-------|-------|
| H2O | | 0.8 | | | |
| PCR buffer | 2 X | 10.0 | | | |
| dNTP | 2.0 mM | 4.0 | | | |
| primer 1 | 10 pmol/ μ l | 1.0 | | | |
| primer 2 | 10 pmol/ μ l | 1.0 | | | |
| primer 3 | 10 pmol/ μ l | 1.0 | | | |
| primer 4 | 10 pmol/ μ l | 1.0 | | | |
| DNA | | 1.0 | | | |
| Taq | 1 U/ μ l | 0.2 | | | |
| | | | | | |
| | | | | | |
| | | | | | |
| total | | 20 | | | |

Reaction Conditions

| step | temp (°C) | time (sec) | note |
|------|-----------|------------|-----------------------|
| 1 | 94 | 120 | |
| 2 | 98 | 10* | |
| 3 | 60 | 30* | |
| 4 | 68 | 60* | *Repeat for 30 cycles |
| | | | |
| | | | |
| | | | |
| | | | |
| | | | |
| | | | |



Marker
Gene Ladder 100 (Wako, Cat. 316-06951)

Gel
2% agarose in 1 X TAE (100 V, 30 min)

PCR products

| primer_set | product_size | product |
|---------------------|--------------|-------------------------|
| primer 1 / primer 2 | ca 600 bp | Tg |
| primer 3 / primer 4 | 324 bp | Internal control (IL-2) |
| | | |
| | | |
| | | |

Comment Novagen KOD Xtreme™ Hot Start DNA Polymerase can be purchased from EMD.