

RBRC 05903

Strain name C57BL/6N-Gal&lt;tm1a(KOMP)Wtsi&gt;/G08

Primer	primer_name	primer_seq	length	Reference
1	intron 2	GTCCCTGAAGCTGCTGAAGGTAG	23	RIKEN BRC
2	intron 3	GTGAATGGTGGTATGAGGTCAGG	23	RIKEN BRC
3		GGCACATGGCTGAATATCGACGG	23	RIKEN BRC

### Reaction Components

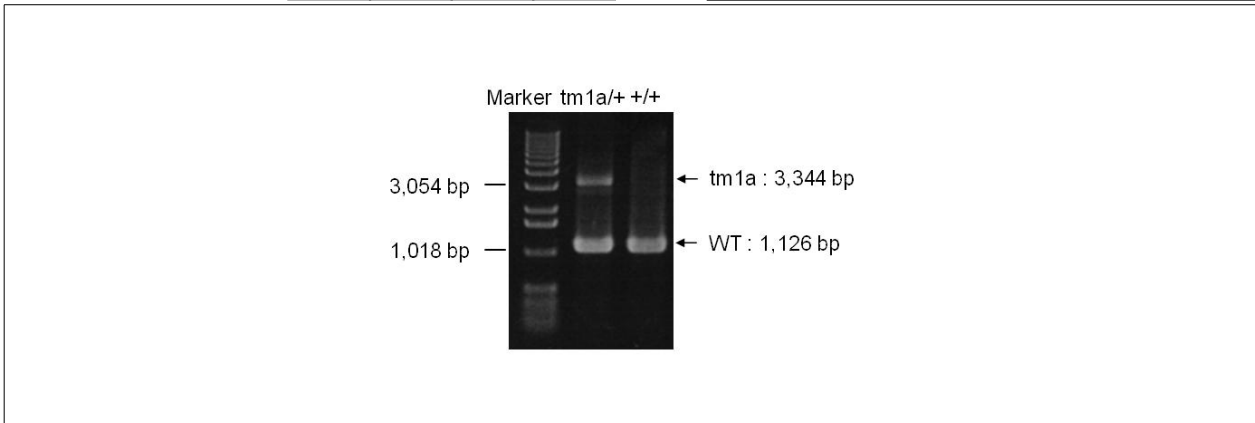
Enzyme TOYOBO KOD FX (Code.No : KFX-101)

Reagent	Conc	Reaction 1	2	3	4	( $\mu$ L)
H2O		1.8				
PCR buffer	2 X	10.0				
dNTP	2.0 mM	4.0				
primer 1	10 pmol/ $\mu$ l	1.0				
primer 2	10 pmol/ $\mu$ l	1.0				
primer 3	10 pmol/ $\mu$ l	1.0				
DNA		1.0				
Taq	1 U/ $\mu$ l	0.2				
total		20				

### Reaction Conditions

step	temp (°C)	time (sec)	note
1	94	120	
2	98	10*	
3	60	30*	
4	68	300*	*Repeat for 30 cycles

Marker	1 kb DNA ladder (Invitrogen, Cat. 15615-024)
Gel	1% agarose in 1 X TAE (100 V, 30 min)



primer_set	product_size	product (allele type)	
primer 1	primer 2	1,126 bp	WT
primer 2	primer 3	3,344 bp	tm1a

+/+ : 1,126 bp  
tm1a/+ : 1,126 bp, 3,344 bp

Comment [Standard PCR](#)

Novagen KOD Xtreme™ Hot Start DNA Polymerase can be purchased from EMD.