

# PCR protocol

RBRC 06171

Strain name FVB-Invs&lt;inv&gt; Tg(EF1-Invs/EGFP)B27Hmd

Primer	primer_name	primer_seq	length
1		CATGTGATAGTCACTCCAGGGGTTG	25
2		CATTGATCCAGATTCTACTGGGTC	25
3		CAGCTGCAAAGCCTTGTTGCAGTGC	25
4		GTGCTAGGAGCTGTGCGAGACCAC	23

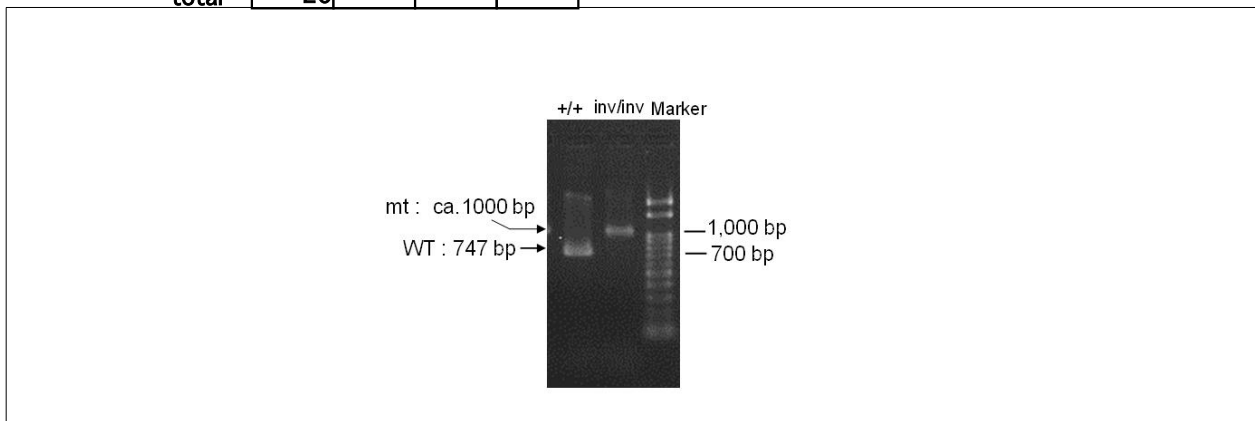
## Reaction Components

Enzyme TOYOBO KOD FX (Code.No : KFX-101)

## Reaction Conditions

step	temp (°C)	time (sec)	note
1	94	120	
2	98	10*	
3	60	30*	
4	68	60*	*Repeat for 30 cycles

	Conc	Run 1	Run 2	Run 3	Run 4
H2O		0.8			
PCR buffer	2 X	10.0			
dNTP	2.0 mM	4.0			
primer 1	10 pmol/μl	1.0			
primer 2	10 pmol/μl	1.0			
primer 3	10 pmol/μl	1.0			
primer 4	10 pmol/μl	1.0			
DNA		1.0			
Taq	1 U/μl	0.2			
<b>total</b>		<b>20</b>			



## Marker

Gene Ladder 100 (Wako, Cat. 316-06951)

## Gel

2% agarose in 1 X TAE (100 V, 30 min)

## PCR products

primer_set	product_size	product
primer 1	ca 1000 bp	mutant(inv)
primer 3	747 bp	WT

**Comment** Novagen KOD Xtreme™ Hot Start DNA Polymerase can be purchased from EMD.