

RBRC 06302

Strain name NEAT1(lacZ)(Acc.No.CDB0773K)

Primer	primer_name	primer_seq	length	
1	LACZ rv-1	GCACATCTGAACTTCAGC	18	
2	NEAT1 WT Rv	AGCAGGGATAGCCTGGTCTT	20	J. Cell Biol., 193, 31-39 (2011).
3	NEAT1 WT Fw	CTAGTGGTGGGGAGGCAGT	19	J. Cell Biol., 193, 31-39 (2011).

**Reaction Components**

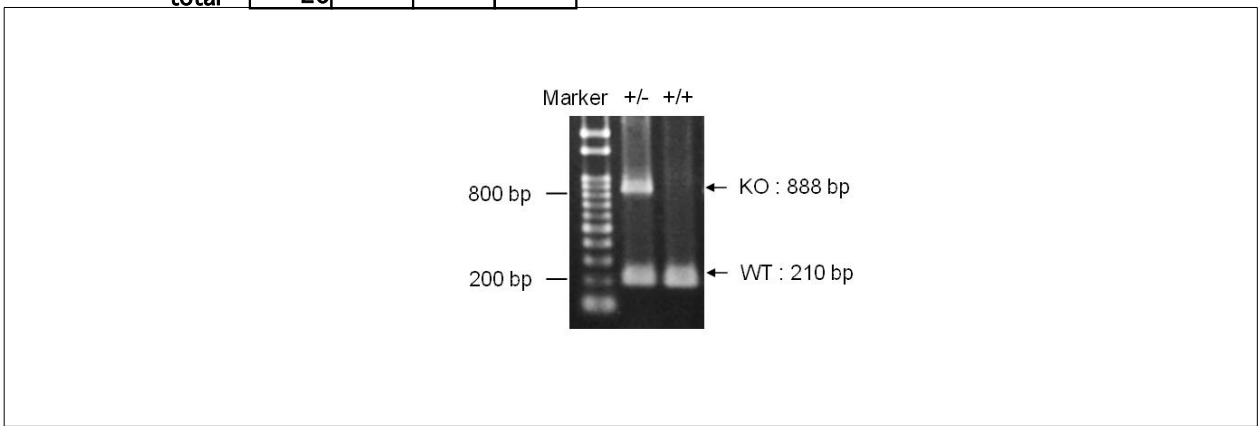
Enzyme TOYOBO KOD FX (Code.No : KFX-101)

**Reaction Conditions**

step	temp (°C)	time (sec)	note
1	94	120	
2	98	10*	
3	60	30*	
4	68	60*	*Repeat for 30 cycles

	Conc	Run 1	Run 2	Run 3	Run 4
H2O		1.8			
PCR buffer	2 X	10.0			
dNTP	2.0 mM	4.0			
primer 1	10 pmol/ $\mu$ l	1.0			
primer 2	10 pmol/ $\mu$ l	1.0			
primer 3	10 pmol/ $\mu$ l	1.0			
DNA		1.0			
Taq	1 U/ $\mu$ l	0.2			
<b>total</b>		<b>20</b>			

Standard PCR



**Marker**  
Gene Ladder 100 (Wako, Cat. 316-06951)

**Gel**  
2% agarose in 1 X TAE (100 V, 30 min)

PCR products			
	primer_set	product_size	product
primer 1	primer 3	888 bp	KO
primer 2	primer 3	210 bp	WT

**Comment** Novagen KOD Xtreme™ Hot Start DNA Polymerase can be purchased from EMD.