

RBRC 06312

Strain name ICR.Cg-Mesp2<tm7(mespb)Ysa>

Primer	primer_name	primer_seq	length	
1	ZmpcL	ACTTTGGCTATCATCTCGTTCCTC	24	Depositor's primer
2	01392	GCTTTGGTCTTGGGCTTCCAGTG	23	RIKEN BRC
3	P2-L1	GATGTCCCCAGAGCCTAGGAACAA	24	Depositor's primer

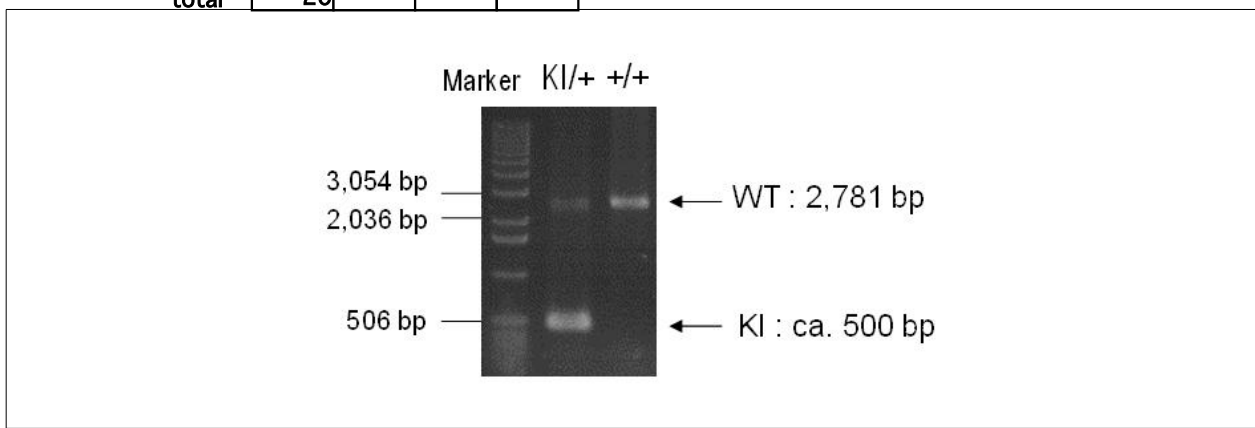
### Reaction Components

Enzyme TOYOBO KOD FX (Code.No : KFX-101)

### Reaction Conditions

	Conc	Run 1	Run 2	Run 3	Run 4
H2O		1.8			
PCR buffer	2 X	10.0			
dNTP	2.0 mM	4.0			
primer 1	10 pmol/ $\mu$ l	1.0			
primer 2	10 pmol/ $\mu$ l	1.0			
primer 3		1.0			
DNA		1.0			
Taq	1 U/ $\mu$ l	0.2			
<b>total</b>		<b>20</b>			

step	temp (°C)	time (sec)	note
1	94	120	
2	98	10*	
3	60	30*	
4	68	240*	*Repeat for 30 cycles



**Marker**  
 1 kb DNA ladder (Invitrogen, Cat. 15615-024)

**Gel**  
 1% agarose in 1 X TAE (100 V, 30 min)

PCR products			
	primer_set	product_size	product
primer 1	primer 2	ca. 500 bp	KI
primer 2	primer 3	2,781 bp	WT

**Comment** Novagen KOD Xtreme™ Hot Start DNA Polymerase can be purchased from EMD.