

RBRC 06319

Strain name B6.BTBR-Pah<enu2>

Primer	primer_name	primer_seq	length	Reference
1	Sense primer	CTTGACTGGTTTCCGCCTC	20	Depositor's primer
2	wt_exon 7	GCCTAATGTACTGTGTGCAGTGCA	24	RIKEN BRC
3	mut_exon 7	GGTGGCCTGGCCTTCCGAGTCGC	23	RIKEN BRC
4	intron 7	GATGTCCAGCTCTGTGAGTCC	21	RIKEN BRC

Reaction Components

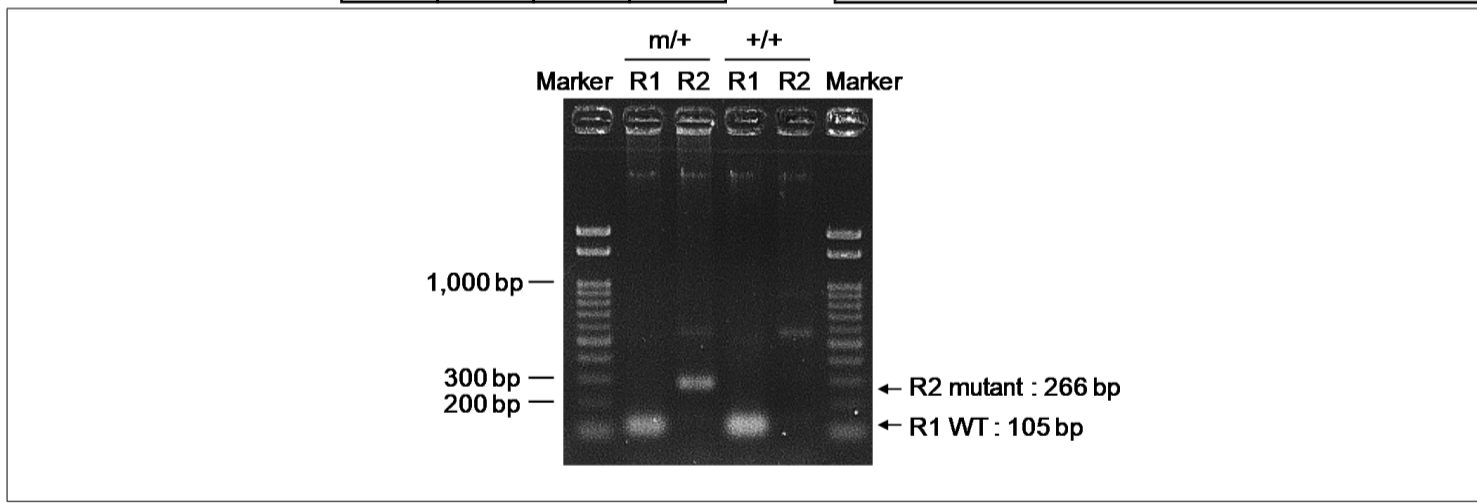
Enzyme QIAGEN Multiplex PCR Kit (Cat. No. 206143)

Reaction Conditions

step	temp (°C)	time (sec)	note
1	95	900	
2	94	30*	
3	60	90*	
4	72	60*	*Repeat for 30 cycles

Reagent	Conc	Reaction 1	2	3	4
H2O		2.0	2.0		
primer 1	10 pmol/ μl	1.0	0		
primer 2	10 pmol/ μl	1.0	0		
primer 3	10 pmol/ μl	0	1.0		
primer 4	10 pmol/ μl	0	1.0		
Master Mix	2 X	5.0	5.0		
DNA		1.0	1.0		
total		10	10		

Marker Gene Ladder 100 (Wako, Cat. 316-06951)
Gel 2% agarose in 1 X TAE (100 V, 30 min)



primer_set	product_size	product (allele type)	
primer 1	primer 2	105 bp	WT
primer 3	primer 4	266 bp	mutant

[Reaction 1] +/+ (wild-type): 105 bp
 m/+ (heterozygous): 105 bp
 m/m (homozygous): none

[Reaction 2] +/+ (wild-type): none
 m/+ (heterozygous): 266 bp
 m/m (homozygous): 266 bp

Comment Separated PCR