

RBRC 06321

Strain name B6.129-Ece2<tm1Ywa>

Primer	primer_name	primer_seq	length	
1	Fw	CAGGGATGCAGAGTGAGACTGTC	23	RIKEN BRC
2	HK18	CTAGAATGGGCCCTACCTT	20	J. Clin Invest., 105, 1373-1382 (2000).
3		AAGAACTCGTCAAGAAGGCGATAGAAGGCG	30	

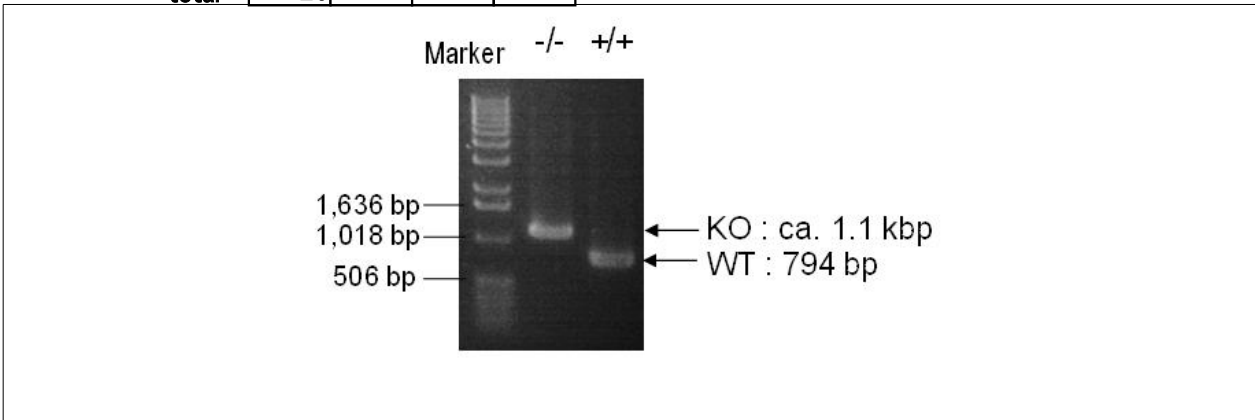
**Reaction Components**

Enzyme TOYOBO KOD FX (Code.No : KFX-101)

**Reaction Conditions**

	Conc	Run 1	Run 2	Run 3	Run 4
H2O		1.8			
PCR buffer	2 X	10.0			
dNTP	2.0 mM	4.0			
primer 1	10 pmol/ $\mu$ l	1.0			
primer 2	10 pmol/ $\mu$ l	1.0			
primer 3	10 pmol/ $\mu$ l	1.0			
DNA		1.0			
Taq	1 U/ $\mu$ l	0.2			
<b>total</b>		<b>20</b>			

step	temp (°C)	time (sec)	note
1	94	120	
2	98	10*	
3	60	30*	
4	68	120*	*Repeat for 30 cycles



**Marker**  
1 kb DNA ladder (Invitrogen, Cat. 15615-024)

**Gel**  
1% agarose in 1 X TAE (100 V, 30 min)

PCR products			
primer_set	product_size	product	
primer 1 primer 2	794 bp	WT	
primer 1 primer 3	ca. 1.1 kbp	KO	

**Comment** Novagen KOD Xtreme™ Hot Start DNA Polymerase can be purchased from EMD.