

RBRC 06332

Strain name C57BL/6N-Nin<tm1b(EUCOMM)Hmgu>/B10

Primer	primer_name	primer_seq	length	
1		GAGCCAATGGTTGTGCTGCTCAGG	24	RIKEN BRC
2		CAGCTACAAGGCTCTTGTGATGG	23	RIKEN BRC
3		GGCACATGGCTGAATATCGACGG	23	RIKEN BRC

### Reaction Components

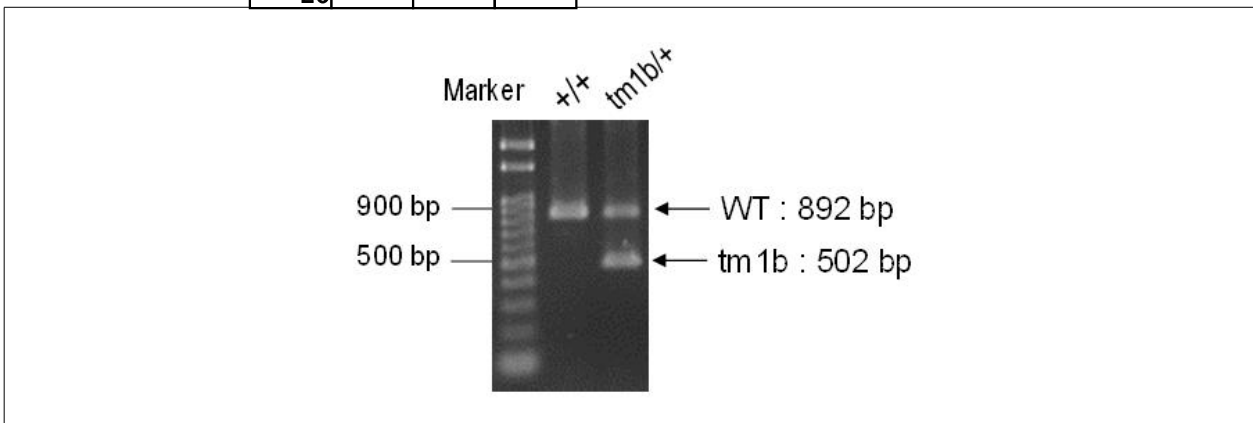
Enzyme TOYOBO KOD FX (Code.No : KFX-101)

### Reaction Conditions

	Conc	Run 1	Run 2	Run 3	Run 4
H2O		1.8			
PCR buffer	2 X	10.0			
dNTP	2.0 mM	4.0			
primer 1	10 pmol/ $\mu$ l	1.0			
primer 2	10 pmol/ $\mu$ l	1.0			
primer 3	10 pmol/ $\mu$ l	1.0			
DNA		1.0			
Taq	1 U/ $\mu$ l	0.2			
<b>total</b>		<b>20</b>			

step	temp (°C)	time (sec)	note
1	94	120	
2	98	10*	
3	60	30*	
4	68	60*	*Repeat for 30 cycles

Standard PCR



### Marker

Gene Ladder 100 (Wako, Cat. 316-06951)

### Gel

2% agarose in 1 X TAE (100 V, 30 min)

### PCR products

primer_set	product_size	product
primer 1	892 bp	WT
primer 2	502 bp	tm1b

### Comment

Novagen KOD Xtreme™ Hot Start DNA Polymerase can be purchased from EMD.