

RBRC 06350

Strain name B6.129S2-Asf1b<Gt(ROSABetageo)437Muv>/Sknz

Primer	primer_name	primer_seq	length	
1	CIA G27S	TCGCAAGTCACTGTGAAGAAGTC	23	Depositor's primer
2	CIA-G28A	ATGGAGGCGTATCTAATGGGAG	22	Depositor's primer
3	LacZ381L22	GGTTTTCCCAGTCACGACGTTG	22	

### Reaction Components

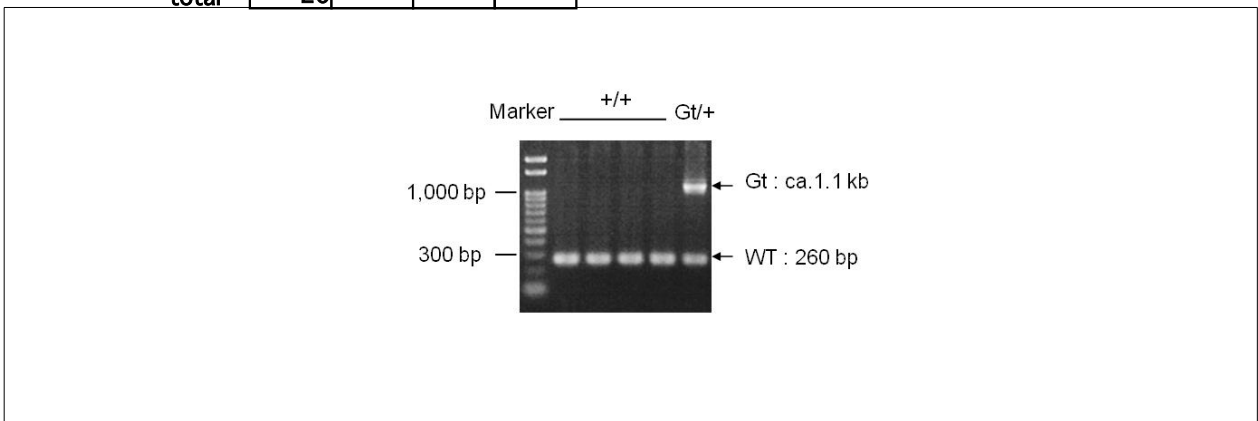
<b>Enzyme</b>	TOYOBO KOD FX (Code.No : KFX-101)
---------------	-----------------------------------

### Reaction Conditions

step	temp (°C)	time (sec)	note
1	94	120	
2	98	10*	
3	60	30*	
4	68	90*	*Repeat for 30 cycles

	Conc	Run 1	Run 2	Run 3	Run 4
H2O		1.8			
PCR buffer	2 X	10.0			
dNTP	2.0 mM	4.0			
primer 1	10 pmol/ $\mu$ l	1.0			
primer 2	10 pmol/ $\mu$ l	1.0			
primer 3	10 pmol/ $\mu$ l	1.0			
DNA		1.0			
Taq	1 U/ $\mu$ l	0.2			
<b>total</b>		<b>20</b>			

### Standard PCR



### Marker

Gene Ladder 100 (Wako, Cat. 316-06951)

### Gel

2% agarose in 1 X TAE (100 V, 30 min)

### PCR products

primer_set	product_size	product
primer 1	260 bp	WT
primer 2	ca 1.1 kb	Gt

**Comment** Novagen KOD Xtreme™ Hot Start DNA Polymerase can be purchased from EMD.