

RBRC 06373

Strain name C57BL/6N-Wasf2<em1Rbrc>

Primer	primer_name	primer_seq	length	Reference
1		TGCCATCCGTCCTGCAGATTC	21	RIKEN BRC
2	wt	GCAAATGTCATCCGACAGCTGG	22	RIKEN BRC
3	del2	GGACCAACATCACCTGGCAGC	22	RIKEN BRC

### Reaction Components

Enzyme Roche Taq (Cat. No. BM1418432)

### Reaction Conditions

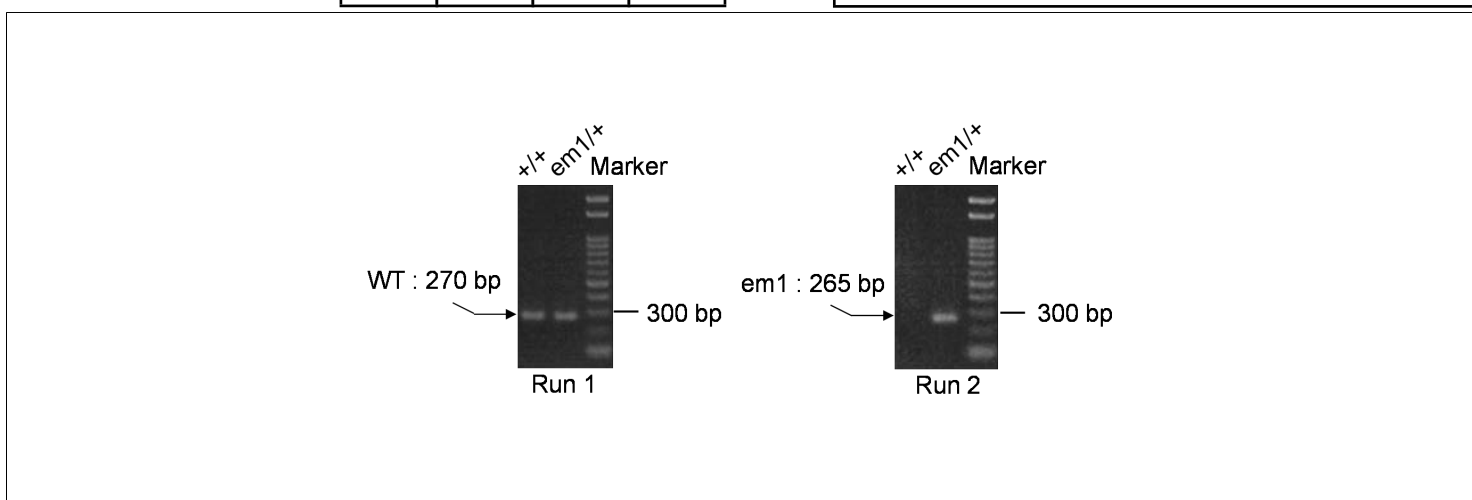
step	temp (°C)	time (sec)	note
1	94	180	
2	94	30*	
3	65	30*	
4	72	60*	*Repeat for 27 cycles
5	72	300	

Reagent	Conc	Reaction 1	2	3	4
H2O		13.3	13.3		
PCR buffer	10 X	2.0	2.0		
dNTP	2.5 mM	1.6	1.6		
primer 1	10 pmol/μl	1.0	1.0		
primer 2	10 pmol/μl	1.0	0		
primer 3	10 pmol/μl	0	1.0		
DNA		1.0	1.0		
Taq	5 U/μl	0.1	0.1		
<b>total</b>		20	20		

(μL)

**Marker** Gene Ladder 100 (Wako, Cat. 316-06951)

**Gel** 2% agarose in 1 X TAE (100 V, 30 min)



primer_set	product_size	product (allele type)	
primer 1	primer 2	270 bp	WT
primer 1	primer 3	265 bp	em1

Comment Allele specific PCR (ASP)



# PCR protocol

Sheet ID PS\_06549  
Release date : 2/18/2016  
Print date : 5/6/2022

RBRC 06373

Strain name C57BL/6N-Wasf2<em1Rbrc>

Primer	primer_name	primer_seq	length	Reference
1		TGCCATCCGTCCTGCAGATTC	21	RIKEN BRC
2	wt	GCAAATGTCATCCGACAGCTGG	22	RIKEN BRC
3	del2	GGACCAACATCACCCCTGGCAGC	22	RIKEN BRC

### Reaction Components

Enzyme Roche Taq (Cat. No. BM1418432)

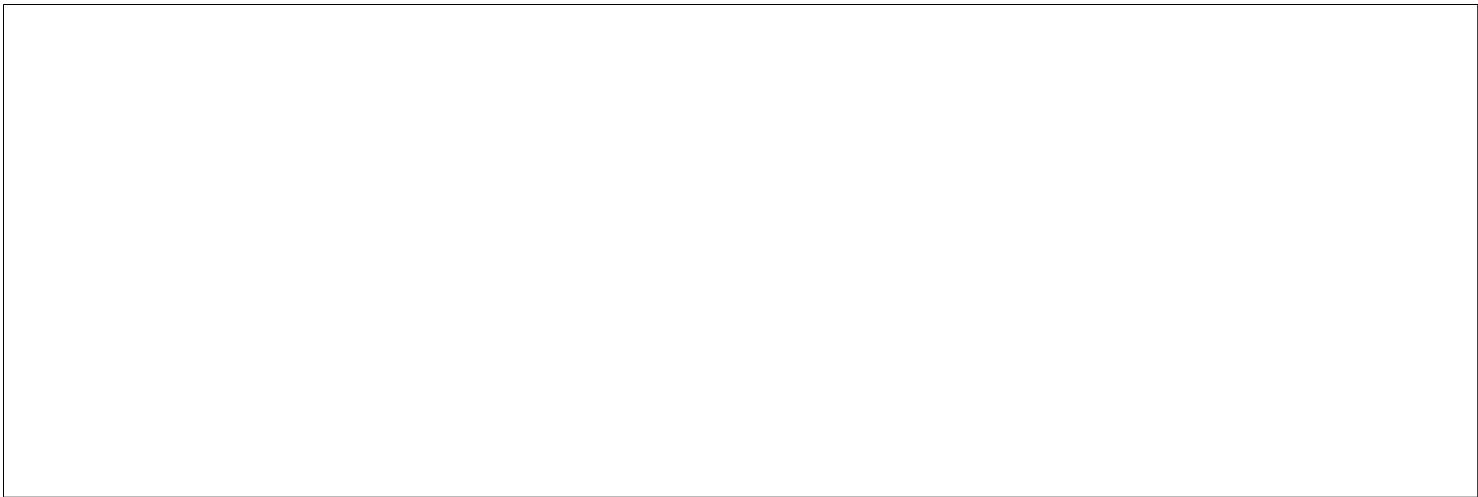
Reagent	Conc	Reaction 1	2	3	4
H2O		13.3	13.3		
PCR buffer	10 X	2.0	2.0		
dNTP	2.5 mM	1.6	1.6		
primer 1	10 pmol/ $\mu$ l	1.0	1.0		
primer 2	10 pmol/ $\mu$ l	1.0	0		
primer 3	10 pmol/ $\mu$ l	0	1.0		
DNA		1.0	1.0		
Taq	5 U/ $\mu$ l	0.1	0.1		
<b>total</b>		20	20		

### Reaction Conditions

step	temp (°C)	time (sec)	note
1	94	180	
2	94	30*	
3	60	30*	
4	72	60*	*Repeat for 35 cycles
5	72	300	

Marker Gene Ladder 100 (Wako, Cat. 316-06951)

Gel 2% agarose in 1 X TAE (100 V, 30 min)



primer_set	product_size	product (allele type)
primer 1 primer 2	270 bp	WT
primer 1 primer 3	265 bp	em1

Comment Allele specific PCR (ASP)

