

RBRC 06418

Strain name JF1.Cg-Dms

Primer	primer_name	primer_seq	length	Reference
1	common	CAACTGCATGACACATGCACCAGC	24	RIKEN BRC
2	WT	CCTGATAACTGTCCAGAGAGACGG	24	RIKEN BRC
3	MT	CCTGATAACTGTCCAGAGAGACGA	24	RIKEN BRC

### Reaction Components

Enzyme

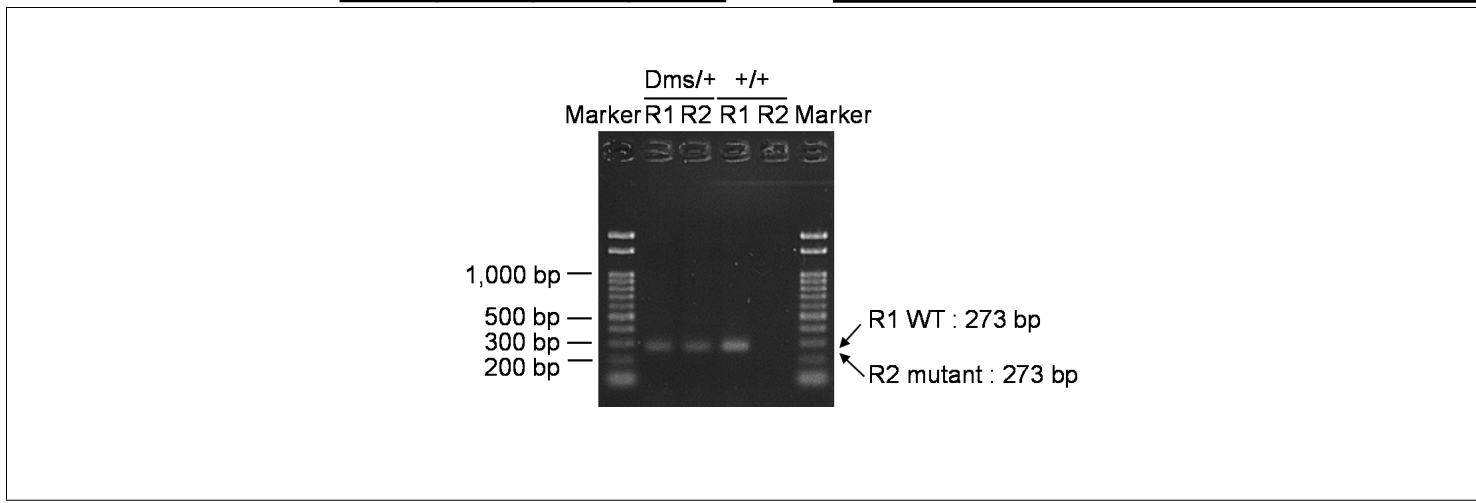
Reagent	Conc	Reaction 1	2	3	4
H2O		2.0	2.0		
primer 1	10 pmol/μl	1.0	1.0		
primer 2	10 pmol/μl	1.0	0		
primer 3	10 pmol/μl	0	1.0		
DNA		1.0	1.0		
Master Mix	2 X	5.0	5.0		
<b>total</b>		10	10		

### Reaction Conditions

step	temp (°C)	time (sec)	note
1	95	900	
2	94	30*	
3	60	90*	
4	72	60*	*Repeat for 30 cycles

Marker

Gel



primer_set	product_size	product (allele type)
primer 1	273 bp	WT
primer 1	273 bp	mutant

Reaction 1  
Dms/+ (heterozygous): 273 bp  
+/+ (wild-type): 273 bp  
Reaction 2  
Dms/+ (heterozygous): 273 bp  
+/+ (wild-type): none

Comment Allele specific PCR (ASP)