



# PCR protocol

Sheet ID PS\_06703  
 Release date : 6/23/2020  
 Print date : 6/23/2020

RBRC 06585

Strain name C57BL/6-Tg(Gt(ROSA)26Sor-ArchT/EGFP)1Imayo

Primer	primer_name	primer_seq	length	Reference
1	RCE-Rosa1	CCCAAAGTCGCTCTGAGTTGTTATC	25	Depositor's primer
2	RCE-Rosa2	GAAGGAGCGGGAGAAATGGATATG	24	Depositor's primer
3	ArchTR	ATGATCCACAGGATGGGGTA	20	Depositor's primer

### Reaction Components

Enzyme

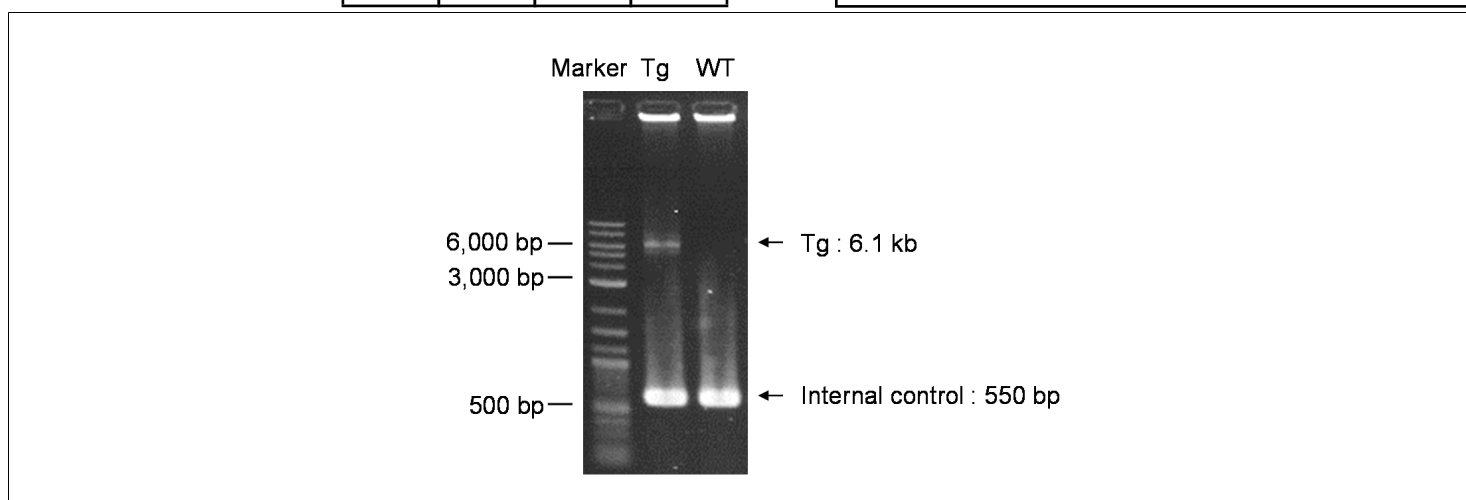
### Reaction Conditions

step	temp (°C)	time (sec)	note
1	94	120	
2	98	10*	
3	60	30*	
4	68	360*	*Repeat for 30 cycles

Reagent	Conc	Reaction 1	2	3	4
H2O		1.8			
PCR buffer	2 X	10.0			
dNTP	2.0 mM	4.0			
primer 1	10 pmol/ $\mu$ l	1.0			
primer 2	10 pmol/ $\mu$ l	1.0			
primer 3	10 pmol/ $\mu$ l	1.0			
DNA		1.0			
Taq	1 U/ $\mu$ l	0.2			
<b>total</b>		20			

( $\mu$  L)

Marker	2-Log DNA Ladder (NEB, Cat. N3200)
Gel	1% agarose in 1 X TAE (100 V, 30 min)



primer_set	product_size	product (allele type)	
primer 1	primer 2	550 bp	Non-Tg : 550 bp Tg : 550 bp, 6.1 kb
primer 1	primer 3	6.1 kb	

### Comment

Novagen KOD Xtreme™ Hot Start DNA Polymerase can be purchased from EMD.