

RBRC 06800

Strain name B6.Cg-Ncaph<tm1.1Hiran>

Primer	primer_name	primer_seq	length	
1	Ncaph f1	AGCCCCCGTGAGAGACTCAC	20	PLoS Genet., 10(12):e1004847. (2014).
2	Ncaph r1	GTGAAGATGCACAGGACAGCAC	22	PLoS Genet., 10(12):e1004847. (2014).
3	Ncaph f3	CGCTATCTCGCTGCTAAGAGATG	23	PLoS Genet., 10(12):e1004847. (2014).

### Reaction Components

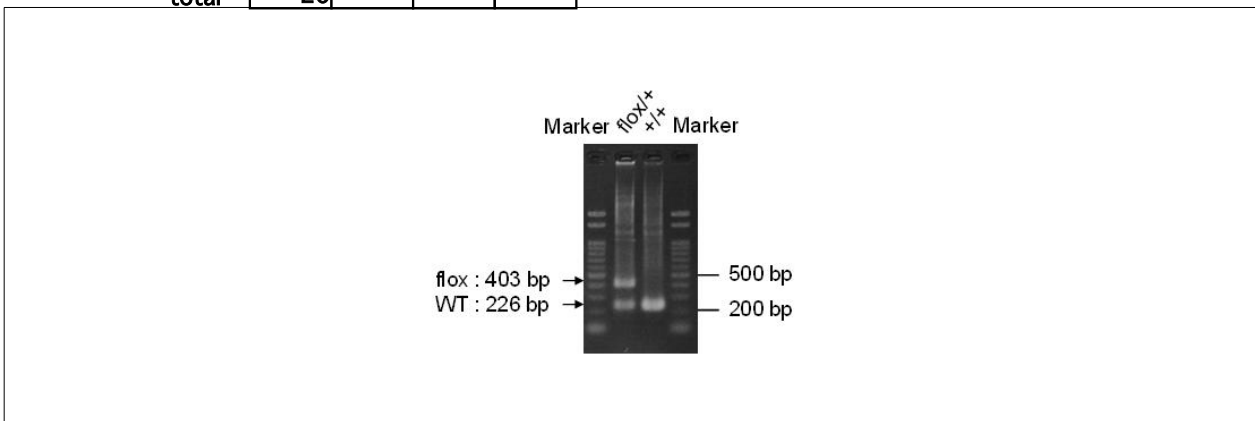
Enzyme TOYOBO KOD FX (Code.No : KFX-101)

### Reaction Conditions

	Conc	Run 1	Run 2	Run 3	Run 4
H2O		1.8			
PCR buffer	2 X	10.0			
dNTP	2.0 mM	4.0			
primer 1	10 pmol/ $\mu$ l	1.0			
primer 2	10 pmol/ $\mu$ l	1.0			
primer 3	10 pmol/ $\mu$ l	1.0			
DNA		1.0			
Taq	1 U/ $\mu$ l	0.2			
<b>total</b>		<b>20</b>			

step	temp (°C)	time (sec)	note
1	94	120	
2	98	10*	
3	60	30*	
4	68	60*	*Repeat for 30 cycles

### Standard PCR



**Marker**  
Gene Ladder 100 (Wako, Cat. 316-06951)

**Gel**  
2% agarose in 1 X TAE (100 V, 30 min)

PCR products		product_size	product
primer 1	primer 2		
primer 1	primer 2	226 bp	WT
primer 1	primer 2	403 bp	flox
primer 2	primer 3	500 bp	null (After cre mediated excision)

**Comment** Novagen KOD Xtreme™ Hot Start DNA Polymerase can be purchased from EMD.