

RBRC 09237

Strain name p21-p-luc(Acc. No. CDB0415T-34)(B6)

Primer	primer_name	primer_seq	length	Reference
1		GTGAGCAGCTGCCGAAGTCAG	21	RIKEN BRC
2	Luc XhoI AS	TATCTCGAGTTACACGGCGATCTTTCC	27	Depositor's primer
3	oIMR0042	CTAGGCCACAGAATTGAAAGATCT	24	JAX Genotyping Protocol
4	oIMR0043	GTAGGTGGAAATTCTAGCATCATCC	25	JAX Genotyping Protocol

### Reaction Components

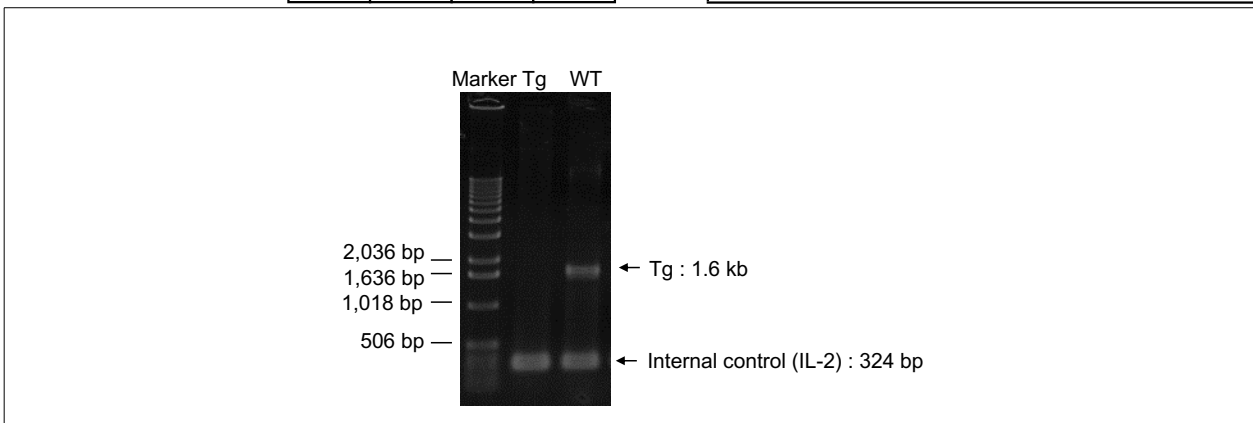
Enzyme TOYOBO KOD FX (Code.No : KFX-101)

Reagent	Conc	Reaction 1	2	3	4	( $\mu$ L)
H2O		0.8				
PCR buffer	2 X	10.0				
dNTP	2.0 mM	4.0				
primer 1	10 pmol/ $\mu$ l	1.0				
primer 2	10 pmol/ $\mu$ l	1.0				
primer 3	10 pmol/ $\mu$ l	1.0				
primer 4	10 pmol/ $\mu$ l	1.0				
DNA		1.0				
Taq	1 U/ $\mu$ l	0.2				
<b>total</b>		<b>20</b>				

### Reaction Conditions

step	temp (°C)	time (sec)	note
1	94	120	
2	98	10*	
3	60	30*	
4	68	180*	*Repeat for 30 cycles

Marker	1 kb DNA ladder (Invitrogen, Cat. 15615-024)
Gel	1% agarose in 1 X TAE (100 V, 30 min)



primer_set	product_size	product (allele type)	
primer 1 primer 2	1.6 kb	Tg	Non-Tg : 324 bp Tg : 324 bp, 1.6 kb
primer 3 primer 4	324 bp	Internal control (IL-2)	

**Comment** [Standard PCR](#)

Novagen KOD Xtreme™ Hot Start DNA Polymerase can be purchased from EMD.