

RBRC 10221

Strain name BALB/c-Tnfsf13b<em1Fjw>

Primer	primer_name	primer_seq	length	Reference
1	pr798	CAAACAGGACTGTATTGAGATAGAATGAAAC	31	Biochem. Biophys. Res. Commun, 489(4), 528-533 (2017)
2	pr799	ACAGTCTTTGCCATTTCTGTGTGTTTTGC	29	Biochem. Biophys. Res. Commun, 489(4), 528-533 (2017)

Reaction Components

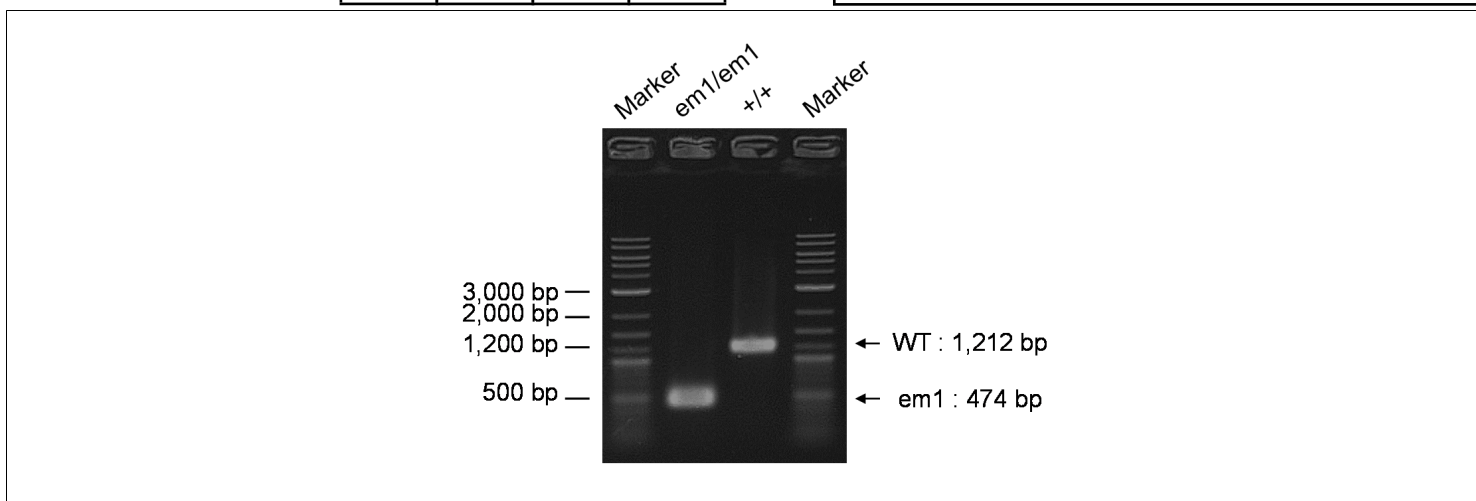
Enzyme TOYOBO KOD FX (Code.No : KFX-101)

Reaction Conditions

step	temp (°C)	time (sec)	note
1	94	120	
2	98	10*	
3	60	30*	
4	68	90*	*Repeat for 30 cycles

Reagent	Conc	Reaction 1	2	3	4	(μL)
H2O		2.8				
PCR buffer	2 X	10.0				
dNTP	2.0 mM	4.0				
primer 1	10 pmol/μl	1.0				
primer 2	10 pmol/μl	1.0				
DNA		1.0				
Taq	1 U/μl	0.2				
total		20				

Marker 2-Log DNA Ladder (NEB, Cat. N3200)
Gel 1% agarose in 1 X TAE (100 V, 30 min)



primer_set	product_size	product (allele type)	
primer 1	primer 2	1,212 bp	WT
primer 1	primer 2	474 bp	em1

+/+ (wild-type): 1,212 bp
em1/em1 (homozygous): 474 bp

Comment Standard PCR

Novagen KOD Xtreme™ Hot Start DNA Polymerase can be purchased from EMD.