

RBRC 10222

Strain name BALB/c-S100a9<em1Fjw>

Primer	primer_name	primer_seq	length	Reference
1	pr800	GTCAAAATTCTGTTTTGTGTATATGTGGAG	30	Immunol. Lett., 194, 13-20 (2017).
2	pr801	AATTCCCTTGTGTTCTTAAAGTTATGTGTC	30	Immunol. Lett., 194, 13-20 (2017).

### Reaction Components

Enzyme TOYOBO KOD FX (Code.No : KFX-101)

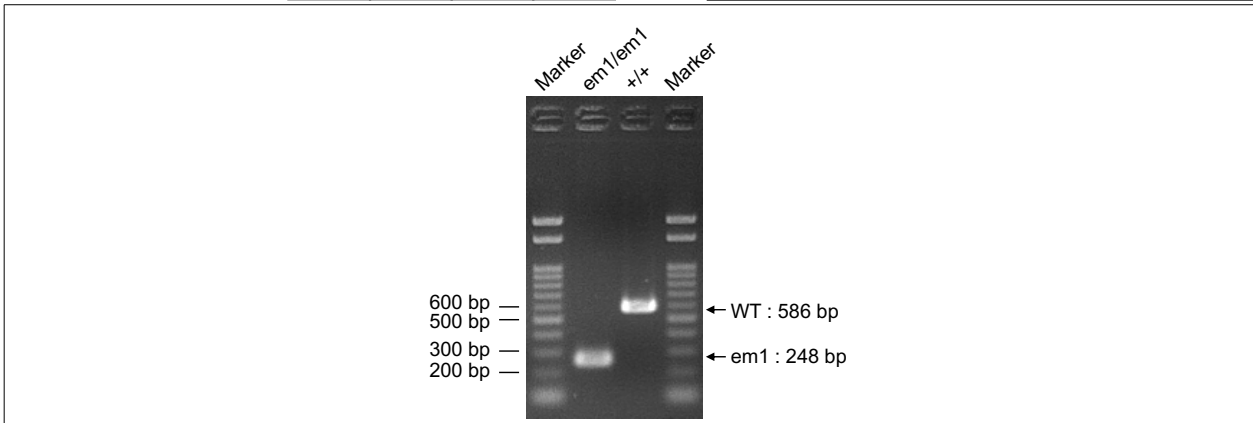
Reagent	Conc	Reaction 1	2	3	4
H2O		2.8			
PCR buffer	2 X	10.0			
dNTP	2.0 mM	4.0			
primer 1	10 pmol/ $\mu$ l	1.0			
primer 2	10 pmol/ $\mu$ l	1.0			
DNA		1.0			
Taq	1 U/ $\mu$ l	0.2			
<b>total</b>		20			

### Reaction Conditions

step	temp (°C)	time (sec)	note
1	94	120	
2	98	10*	
3	60	30*	
4	68	60*	*Repeat for 30 cycles

Marker Gene Ladder 100 (Wako, Cat. 316-06951)

Gel 2% agarose in 1 X TAE (100 V, 30 min)



primer_set	product_size	product (allele type)	
primer 1	primer 2	586 bp	WT
primer 1	primer 2	248 bp	em1

+/+ : 586 bp  
em1/em1 : 248 bp

Comment [Standard PCR](#)

Novagen KOD Xtreme™ Hot Start DNA Polymerase can be purchased from EMD.