

RBRC 10280

Strain name B6.B6CB-Ahcy11<tm1Kmik>/1

Primer	primer_name	primer_seq	length	Reference
1	F_loxP_IT	ATGACTTTGATGTCCCCTCTGTC	23	Depositor's primer
2	R_loxP_IT	ATATAGGAACTTCCCAGTGCCAC	23	Depositor's primer

Reaction Components

Enzyme

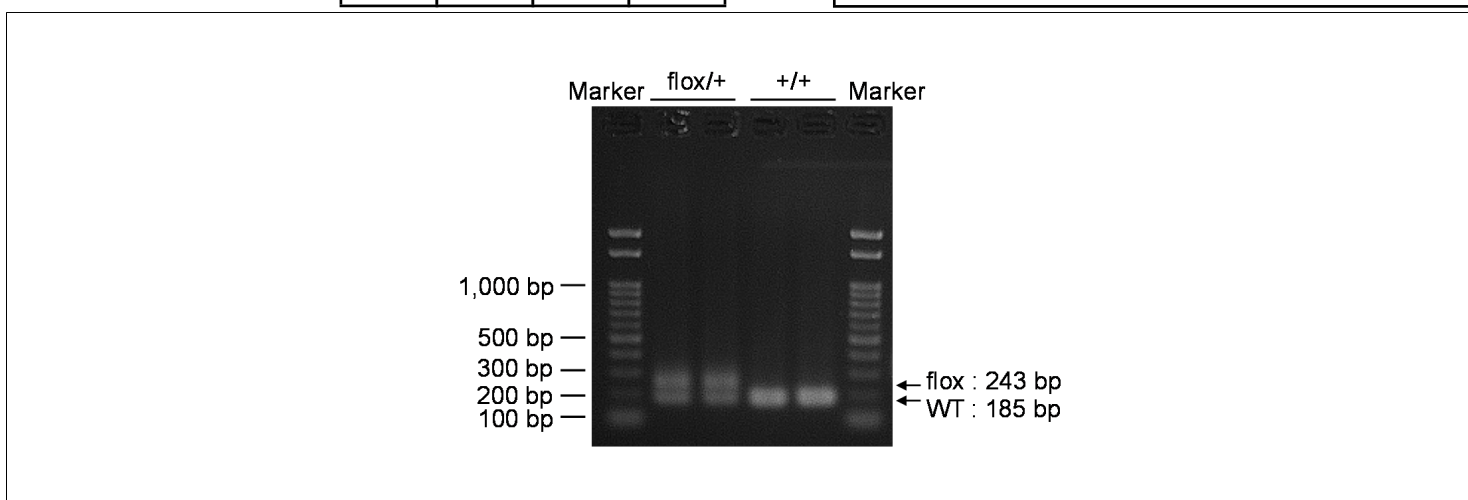
Reaction Conditions

step	temp (°C)	time (sec)	note
1	94	120	
2	98	10*	
3	60	30*	
4	68	60*	*Repeat for 30 cycles

Reagent	Conc	Reaction 1	2	3	4	(μ L)
H2O		2.8				
PCR buffer	2 X	10.0				
dNTP	2.0 mM	4.0				
primer 1	10 pmol/ μ l	1.0				
primer 2	10 pmol/ μ l	1.0				
DNA		1.0				
Taq	1 U/ μ l	0.2				
total		20				

Marker

Gel



primer_set	product_size	product (allele type)	
primer 1	primer 2	185 bp	WT
primer 1	primer 2	243 bp	flox

+/+ (wild-type): 185 bp
flox/+ (heterozygous): 185 bp and 243 bp

Comment [Standard PCR](#)

Novagen KOD Xtreme™ Hot Start DNA Polymerase can be purchased from EMD.