

RBRC 10448

Strain name B6.129-Apba1<tm1Amor>/Tsuz

Primer	primer_name	primer_seq	length	Reference
1		GTAGTACTCTATCCATAGACCTCG	24	RIKEN BRC
2	sequence 5'	CTCACTGCGCGCTCATTTTG	20	Depositor's primer
3	sequence 5'	GGAATGTTTCCACCCAATGTCG	22	Depositor's primer

### Reaction Components

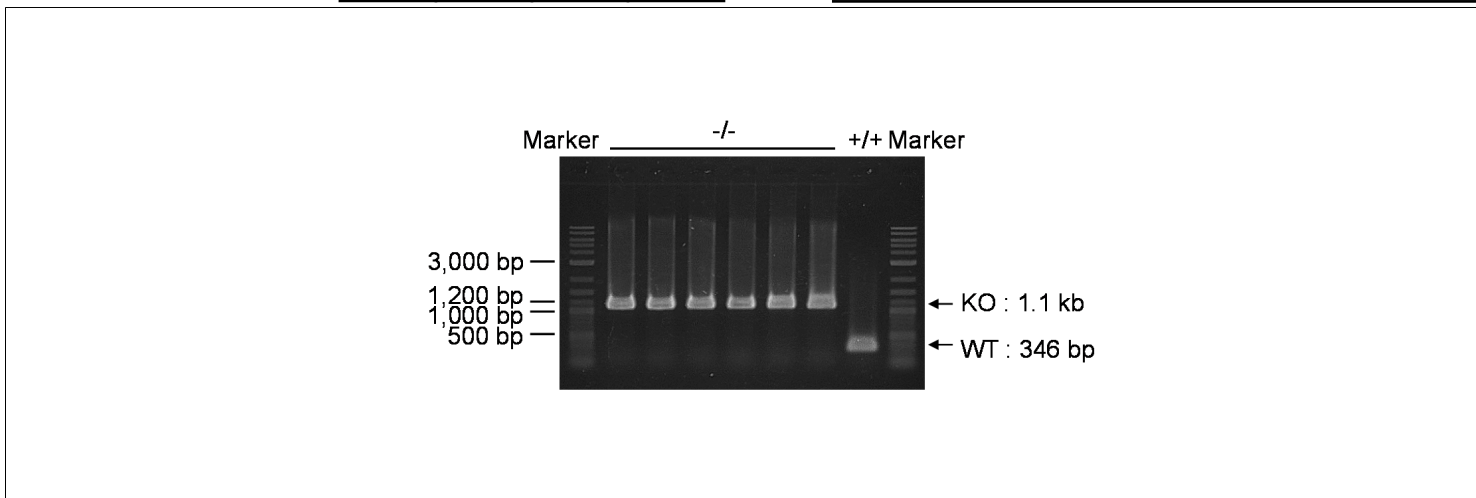
Enzyme TOYOBO KOD FX (Code.No : KFX-101)

Reagent	Conc	Reaction 1	2	3	4	( $\mu$ L)
H2O		1.8				
PCR buffer	2 X	10.0				
dNTP	2.0 mM	4.0				
primer 1	10 pmol/ $\mu$ l	1.0				
primer 2	10 pmol/ $\mu$ l	1.0				
primer 3	10 pmol/ $\mu$ l	1.0				
DNA		1.0				
Taq	1 U/ $\mu$ l	0.2				
<b>total</b>		20				

### Reaction Conditions

step	temp (°C)	time (sec)	note
1	94	120	
2	98	10*	
3	60	30*	
4	68	90*	*Repeat for 30 cycles

Marker 2-Log DNA Ladder (NEB, Cat. N3200)  
Gel 1% agarose in 1 X TAE (100 V, 30 min)



primer_set	product_size	product (allele type)	
primer 1	primer 2	346 bp	WT
primer 1	primer 3	1.1 kb	KO

+/+ (wild-type): 346 bp  
-/- (homozygous): 1.1 kb

Comment [Standard PCR](#)

Novagen KOD Xtreme™ Hot Start DNA Polymerase can be purchased from EMD.