

RBRC 10663

Strain name B6.Cg-Xcl1<tm1.2Ksho>

Primer	primer_name	primer_seq	length	Reference
1	Xcl1_con_S1	GACACCCTAAGTAAGTGGCTGTTGAGT	27	Depositor's primer
2	Xcl1_long_R4	CATCTGTATACATGTGGCCACATAACC	28	Depositor's primer

Reaction Components

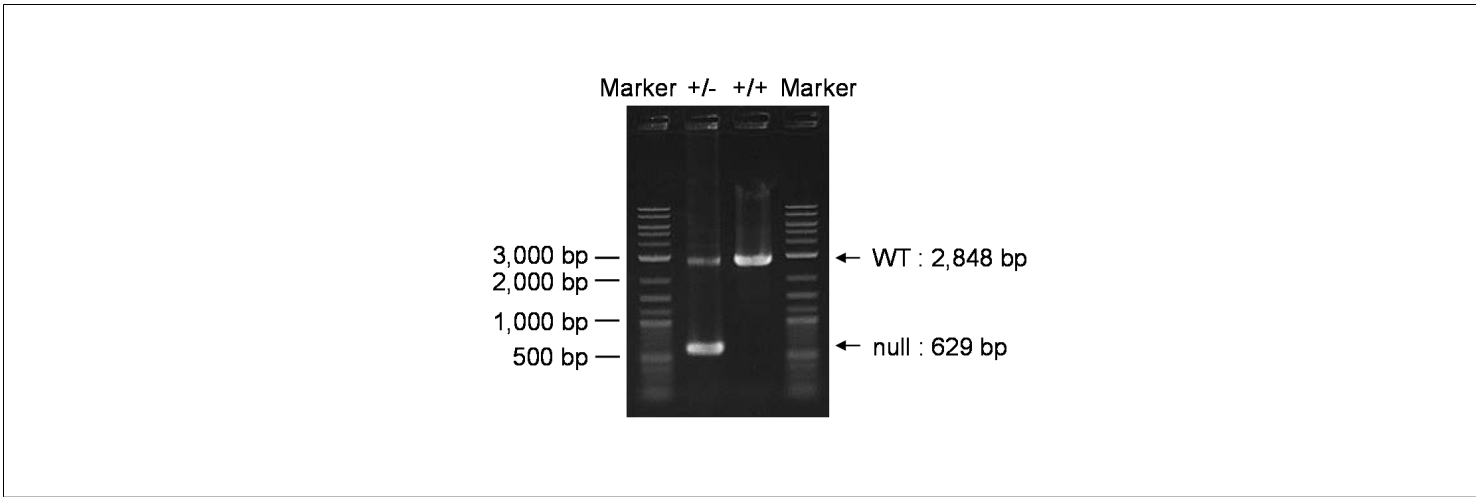
Enzyme TOYOBO KOD FX (Code.No : KFX-101)

Reagent	Conc	Reaction 1	2	3	4
H2O		2.8			
PCR buffer	2 X	10.0			
dNTP	2.0 mM	4.0			
primer 1	10 pmol/μl	1.0			
primer 2	10 pmol/μl	1.0			
DNA		1.0			
Taq	1 U/μl	0.2			
total		20			

Reaction Conditions

step	temp (°C)	time (sec)	note
1	94	120	
2	98	10*	
3	60	30*	
4	68	240*	*Repeat for 30 cycles

Marker 2-Log DNA Ladder (NEB, Cat. N3200)
Gel 1% agarose in 1 X TAE (100 V, 30 min)



primer_set	product_size	product (allele type)
primer 1 / primer 2	2,848 bp	WT
primer 1 / primer 2	629 bp	null

Comment Standard PCR

Novagen KOD Xtreme™ Hot Start DNA Polymerase can be purchased from EMD.