

RBRC 11139

Strain name B6.Cg-Dnase1l3<tm1Dkit>

Primer	primer_name	primer_seq	length	Reference
1	DNase1L3-sense primer	GCACACAACCTCCCGAGACCTCCG	23	Depositor's primer
2	DNase1L3-antisense primer	CACTCCTGGGCTTCTTGATGGTCAG	25	Depositor's primer
3	NeoR primer	GATTCGCAGCGCATCGCCTTCTATCG	26	Mol. Cell. Biol., 24, 6539-6549 (2004).

### Reaction Components

Enzyme TOYOBO KOD FX (Code.No : KFX-101)

Reagent	Conc	Reaction 1	2	3	4
H2O		1.8			
PCR buffer	2 X	10.0			
dNTP	2.0 mM	4.0			
primer 1	10 pmol/μl	1.0			
primer 2	10 pmol/μl	1.0			
primer 3	10 pmol/μl	1.0			
DNA		1.0			
Taq	1 U/μl	0.2			
<b>total</b>		<b>20</b>			

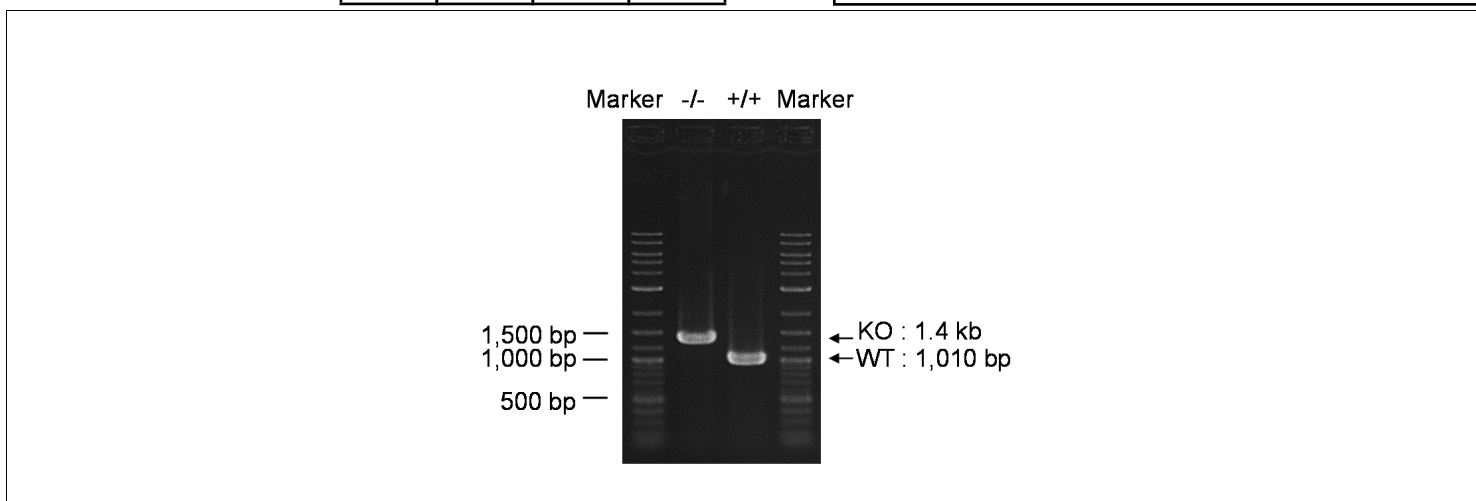
(μL)

### Reaction Conditions

step	temp (°C)	time (sec)	note
1	94	120	
2	98	10*	
3	60	30*	
4	68	180*	*Repeat for 30 cycles

Marker 2-Log DNA Ladder (NEB, Cat. N3200)

Gel 1% agarose in 1 X TAE (100 V, 30 min)



primer_set	product_size	product (allele type)	
primer 1	primer 2	1,010 bp	WT
primer 2	primer 3	1.4 kb	KO

+/+ (wild-type): 1,010 bp  
-/- (homozygous): 1.4 kb

Comment [Standard PCR](#)

Novagen KOD Xtreme™ Hot Start DNA Polymerase can be purchased from EMD.