

RBRC 11195

Strain name B6-II1rl1<tm1.1(hCD2/YFP)Shkm>

Primer	primer_name	primer_seq	length	Reference
1	T1ST2-U24269	ATTACTATCCTGTGCCATTGC	21	Depositor's primer
2	T1ST2-L24668	GCTCCTAGCCATCAATGAATG	21	Depositor's primer
3	CD2-L96	TTCCAAGGCATTCGTAATCTC	21	Depositor's primer
4	EYFP-U686	GGATCACTCTCGGCATGGACG	21	Depositor's primer

### Reaction Components

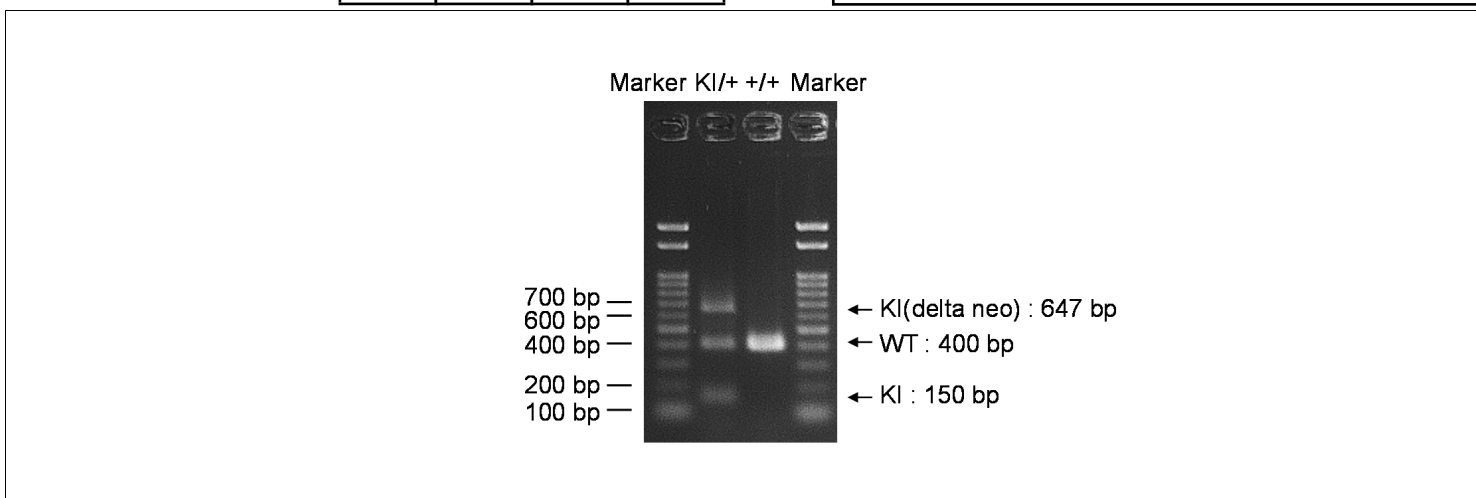
**Enzyme** TOYOBO KOD FX (Code.No : KFX-101)

Reagent	Conc	Reaction 1	2	3	4	
H2O		0.8				( $\mu$ L)
PCR buffer	2 X	10.0				
dNTP	2.0 mM	4.0				
primer 1	10 pmol/ $\mu$ l	1.0				
primer 2	10 pmol/ $\mu$ l	1.0				
primer 3	10 pmol/ $\mu$ l	1.0				
primer 4	10 pmol/ $\mu$ l	1.0				
DNA		1.0				
Taq	1 U/ $\mu$ l	0.2				
<b>total</b>		20				

### Reaction Conditions

step	temp (°C)	time (sec)	note
1	94	120	
2	98	10*	
3	60	30*	
4	68	60*	*Repeat for 30 cycles

<b>Marker</b>	Gene Ladder 100 (Wako, Cat. 316-06951)
<b>Gel</b>	2% agarose in 1 X TAE (100 V, 30 min)



primer_set	product_size	product (allele type)	
primer 1	primer 2	400 bp	WT
primer 1	primer 3	150 bp	KI
primer 2	primer 4	647 bp	KI(delta neo)

+/+ (wild-type): 400 bp  
 KI/+ (heterozygous): 400 bp and 150 bp and 647 bp

**Comment** [Standard PCR](#)

Novagen KOD Xtreme™ Hot Start DNA Polymerase can be purchased from EMD.