

RBRC 11283

Strain name B6.Cg-Tg(Scn4b-Venus)#Nn

Primer	primer_name	primer_seq	length	Reference
1	SCN4B-FW8336	GCTGCGGATGTCCTCCCGGCGGTCC	25	Nat. Commun., 5:5525 (2014).
2	SCN4B-RV473	GCCAGTGCCAGCCATCTCGCCTG	25	Nat. Commun., 5:5525 (2014).
3	GFP_Venus-A660	GACCATGTGATCGCGCTTCTCGTTG	25	J. Biol. Chem., 295(29):9768-9785(2020).

**Reaction Components**

**Enzyme** TOYOBO KOD FX (Code.No : KFX-101)

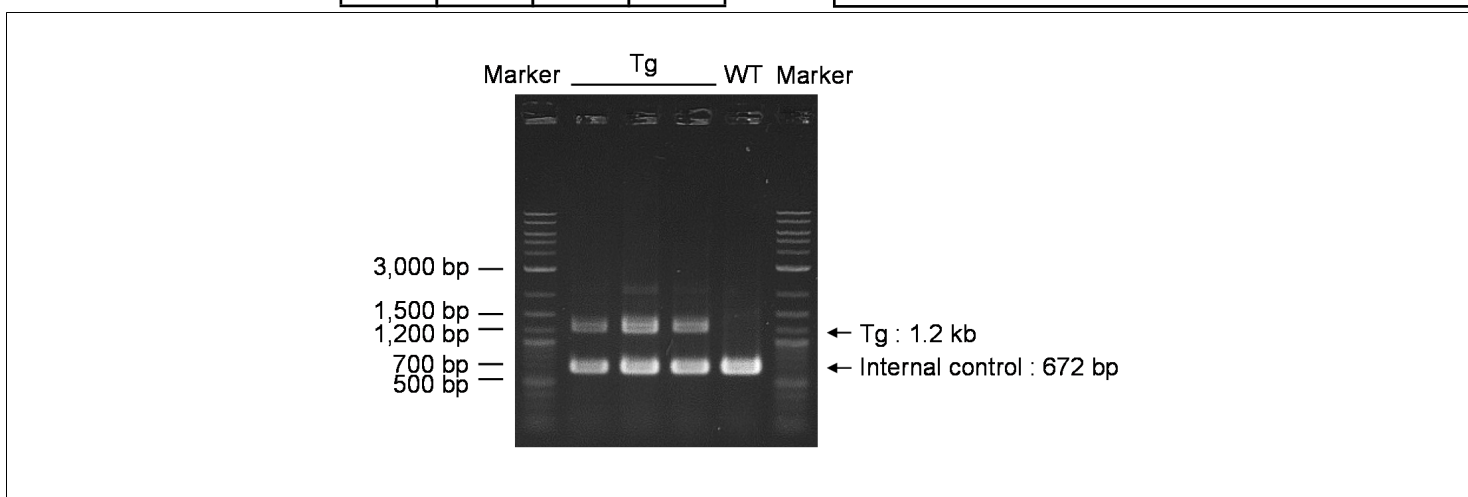
Reagent	Conc	Reaction 1	2	3	4
H2O		1.8			
PCR buffer	2 X	10.0			
dNTP	2 mM	4.0			
primer 1	10 pmol/μl	1.0			
primer 2	10 pmol/μl	1.0			
primer 3	10 pmol/μl	1.0			
DNA		1.0			
Taq	1 U/μl	0.2			
<b>total</b>		20			

**Reaction Conditions**

step	temp (°C)	time (sec)	note
1	94	120	
2	98	10*	
3	60	30*	
4	68	120*	*Repeat for 30 cycles

**Marker** 2-Log DNA Ladder (NEB, Cat. N3200)

**Gel** 1% agarose in 1 X TAE (100 V, 30 min)



primer_set		product_size	product (allele type)
primer 1	primer 2	672 bp	Internal control
primer 1	primer 3	1.2 kb	Tg

Non-Tg : 672 bp  
Tg : 672 bp, 1.2 kb

**Comment** Standard PCR

Novagen KOD Xtreme™ Hot Start DNA Polymerase can be purchased from EMD.