

RBRC 11565

Strain name C.Cg-Ace2<em1(ACE2)Okt>

Primer	primer_name	primer_seq	length	Reference
1	exon 2	GCTCAGTGGATGGGATCTTGG	21	RIKEN BRC
2	exon 2	CCTCGGTGAGGGACTGAGCAGTAG	24	RIKEN BRC
3	exon 14	GATTTTAGGCTTATCCTCACTTTGATGC	28	RIKEN BRC

Reaction Components

Enzyme TOYOBO KOD FX (Code.No : KFX-101)

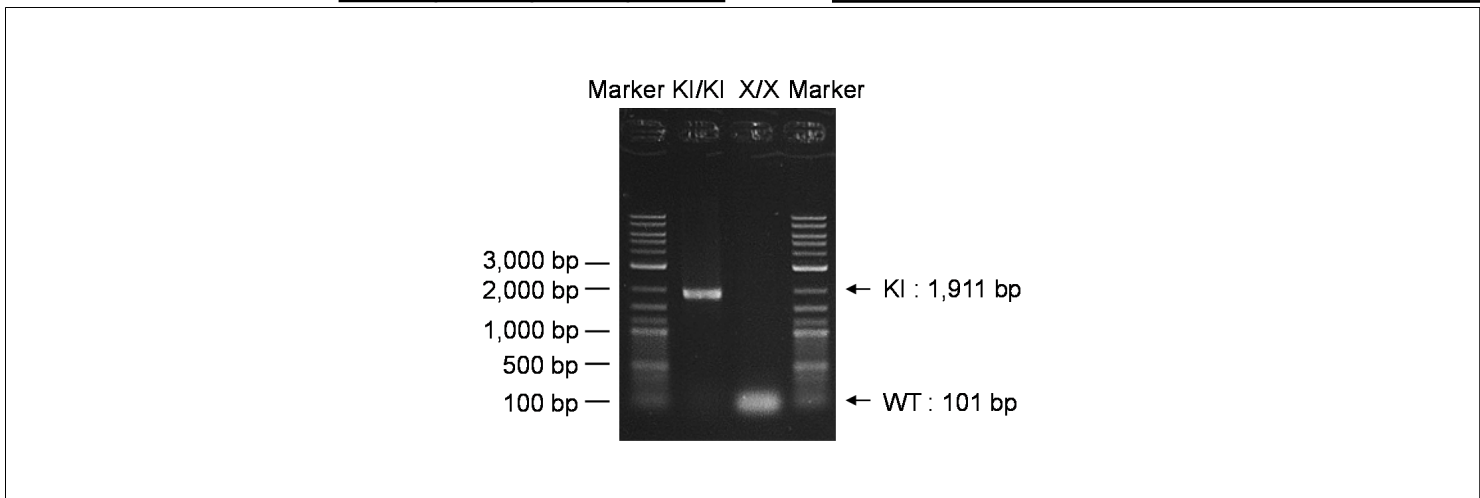
Reaction Conditions

step	temp (°C)	time (sec)	note
1	94	120	
2	98	10*	
3	60	30	
4	68	180*	*Repeat for 30 cycles

Reagent	Conc	Reaction 1	2	3	4
H2O		1.8			
PCR buffer	2 X	10.0			
dNTP	2.0 mM	4.0			
primer 1	10 pmol/μl	1.0			
primer 2	10 pmol/μl	1.0			
primer 3	10 pmol/μl	1.0			
DNA		1.0			
Taq	1 U/μl	0.2			
total		20			

(μL)

Marker	2-Log DNA Ladder (NEB, Cat. N3200)
Gel	1% agarose in 1 X TAE (100 V, 30 min)



primer_set	product_size	product (allele type)	
primer 1	primer 2	101 bp	WT
primer 1	primer 3	1,911 bp	KI (em1)

+/+ (wild-type): 101 bp
 KI/KI (homozygous): 1,911 bp

Comment [Standard PCR](#)

Novagen KOD Xtreme™ Hot Start DNA Polymerase can be purchased from EMD.